



March 24, 2026
IGI Report Number LG776676264
HEART BRILLIANT
LABORATORY GROWN DIAMOND
5.62 X 6.24 X 3.59 MM
 Carat Weight **0.76 CARAT**
 Color Grade **E**
 Clarity Grade **VS 1**
 Polish **EXCELLENT**
 Symmetry **VERY GOOD**
 Fluorescence **NONE**
 Inscription(s) **IGI LG776676264**

LABORATORY GROWN DIAMOND REPORT

March 24, 2026
 IGI Report Number **LG776676264**
 Description **LABORATORY GROWN DIAMOND**
 Shape and Cutting Style **HEART BRILLIANT**
 Measurements **5.62 X 6.24 X 3.59 MM**

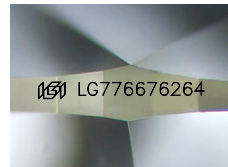
GRADING RESULTS

Carat Weight **0.76 CARAT**
 Color Grade **E**
 Clarity Grade **VS 1**

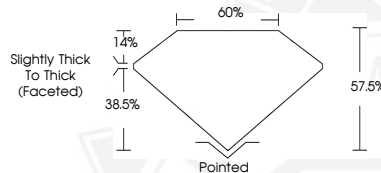
ADDITIONAL GRADING INFORMATION

Polish **EXCELLENT**
 Symmetry **VERY GOOD**
 Fluorescence **NONE**
 Inscription(s) **IGI LG776676264**

Comments: This Laboratory Grown Diamond was created by Chemical Vapor Deposition (CVD) growth process. Type IIa



Sample Image Used



March 24, 2026
IGI Report Number LG776676264
HEART BRILLIANT
LABORATORY GROWN DIAMOND
5.62 X 6.24 X 3.59 MM
 Carat Weight **0.76 CARAT**
 Color Grade **E**
 Clarity Grade **VS 1**
 Polish **EXCELLENT**
 Symmetry **VERY GOOD**
 Fluorescence **NONE**
 Inscription(s) **IGI LG776676264**

THIS DOCUMENT WAS PRODUCED WITH THE FOLLOWING SECURITY MEASURES: SPECIAL DOCUMENT PAPER, INK SCREENS, WATERMARK, BACKGROUND DESIGNS, HOLOGRAM AND OTHER SECURITY FEATURES NOT LISTED AND DO EXCEED DOCUMENT SECURITY INDUSTRY GUIDELINES.