



**LABORATORY GROWN DIAMOND REPORT**

February 26, 2026  
 IGI Report Number **LG776678025**  
 Description **LABORATORY GROWN DIAMOND**  
 Shape and Cutting Style **ROUND BRILLIANT**  
 Measurements **3.91 - 3.94 X 2.45 MM**

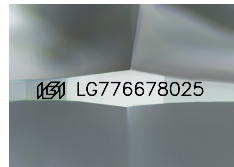
**GRADING RESULTS**

Carat Weight **0.23 CARAT**  
 Color Grade **E**  
 Clarity Grade **VVS 2**  
 Cut Grade **EXCELLENT**

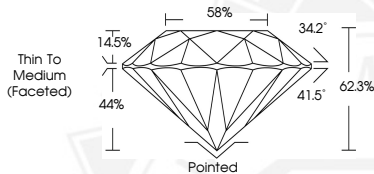
**ADDITIONAL GRADING INFORMATION**

Polish **VERY GOOD**  
 Symmetry **VERY GOOD**  
 Fluorescence **NONE**  
 Inscription(s) **IGI LG776678025**

Comments: This Laboratory Grown Diamond was created by Chemical Vapor Deposition (CVD) growth process. Type IIa



Sample Image Used



February 26, 2026  
 IGI Report Number **LG776678025**  
 ROUND BRILLIANT  
 LABORATORY GROWN DIAMOND  
 3.91 - 3.94 X 2.45 MM  
 Carat Weight **0.23 CARAT**  
 Color Grade **E**  
 Clarity Grade **VVS 2**  
 Cut Grade **EXCELLENT**  
 Polish **VERY GOOD**  
 Symmetry **VERY GOOD**  
 Fluorescence **NONE**  
 Inscription(s) **IGI LG776678025**

Comments: This Laboratory Grown Diamond was created by Chemical Vapor Deposition (CVD) growth process. Type IIa



February 26, 2026  
 IGI Report Number **LG776678025**  
 ROUND BRILLIANT  
 LABORATORY GROWN DIAMOND  
 3.91 - 3.94 X 2.45 MM  
 Carat Weight **0.23 CARAT**  
 Color Grade **E**  
 Clarity Grade **VVS 2**  
 Cut Grade **EXCELLENT**  
 Polish **VERY GOOD**  
 Symmetry **VERY GOOD**  
 Fluorescence **NONE**  
 Inscription(s) **IGI LG776678025**

Comments: This Laboratory Grown Diamond was created by Chemical Vapor Deposition (CVD) growth process. Type IIa



THIS DOCUMENT WAS PRODUCED WITH THE FOLLOWING SECURITY MEASURES: SPECIAL DOCUMENT PAPER, INK SCREENS, WATERMARK, BACKGROUND DESIGNS, HOLOGRAM AND OTHER SECURITY FEATURES NOT LISTED AND DO EXCEED DOCUMENT SECURITY INDUSTRY GUIDELINES.