



ELECTRONIC COPY

LABORATORY GROWN DIAMOND REPORT

February 25, 2026
IGI Report Number LG776686896
Description LABORATORY GROWN DIAMOND
Shape and Cutting Style CUT CORNERED RECTANGULAR MODIFIED BRILLIANT
Measurements 11.33 X 7.97 X 5.28 MM

GRADING RESULTS

Carat Weight 4.08 CARATS
Color Grade E
Clarity Grade VS 1

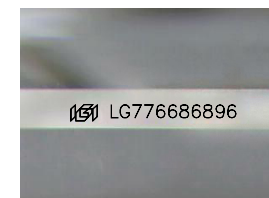
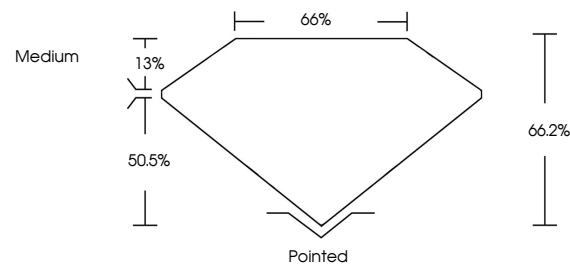
ADDITIONAL GRADING INFORMATION

Polish EXCELLENT
Symmetry EXCELLENT
Fluorescence NONE

Inscription(s) IGI LG776686896

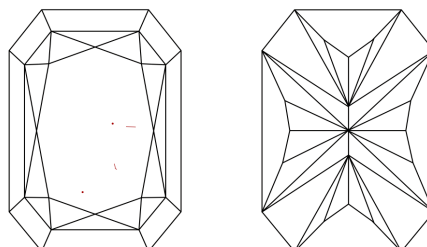
Comments: This Laboratory Grown Diamond was created by Chemical Vapor Deposition (CVD) growth process.
Type IIa

PROPORTIONS



Sample Image Used

CLARITY CHARACTERISTICS



KEY TO SYMBOLS

Red symbols indicate internal characteristics.
Green symbols indicate external characteristics.

COLOR

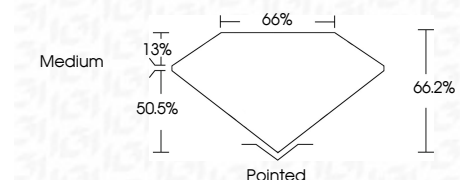
D E F G H I J Faint Very Light Light

CLARITY

FL IF VS¹⁻² VS¹⁻² SI¹⁻² I¹⁻³
Flawless Internally Flawless Very Very Slightly Included Very Slightly Included Slightly Included Included



February 25, 2026
IGI Report Number LG776686896
Description LABORATORY GROWN DIAMOND
Shape and Cutting Style CUT CORNERED RECTANGULAR MODIFIED BRILLIANT
Measurements 11.33 X 7.97 X 5.28 MM
GRADING RESULTS
Carat Weight 4.08 CARATS
Color Grade E
Clarity Grade VS 1



ADDITIONAL GRADING INFORMATION

Polish EXCELLENT
Symmetry EXCELLENT
Fluorescence NONE
Inscription(s) IGI LG776686896
Comments: This Laboratory Grown Diamond was created by Chemical Vapor Deposition (CVD) growth process.
Type IIa



February 25, 2026
IGI Report No LG776686896
CUT CORNERED RECT. MODIFIED BRILLIANT
11.33 X 7.97 X 5.28 MM
4.08 CARATS
E
VS 1
66.2%
50.5%
Medium
Pointed
EXCELLENT
EXCELLENT
NONE
IGI LG776686896
Comments: This Laboratory Grown Diamond was created by Chemical Vapor Deposition (CVD) growth process.
Type IIa