



ELECTRONIC COPY

LG776690942
Report verification at igi.org



February 26, 2026

IGI Report Number **LG776690942**

Description **LABORATORY GROWN DIAMOND**

Shape and Cutting Style **ROUND BRILLIANT**

Measurements **9.03 - 9.08 X 5.60 MM**

GRADING RESULTS

Carat Weight **2.84 CARATS**

Color Grade **G**

Clarity Grade **VS 1**

Cut Grade **IDEAL**

February 26, 2026

IGI Report Number **LG776690942**

Description **LABORATORY GROWN DIAMOND**

Shape and Cutting Style **ROUND BRILLIANT**

Measurements **9.03 - 9.08 X 5.60 MM**

GRADING RESULTS

Carat Weight **2.84 CARATS**

Color Grade **G**

Clarity Grade **VS 1**

Cut Grade **IDEAL**

ADDITIONAL GRADING INFORMATION

Polish **EXCELLENT**

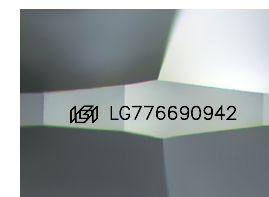
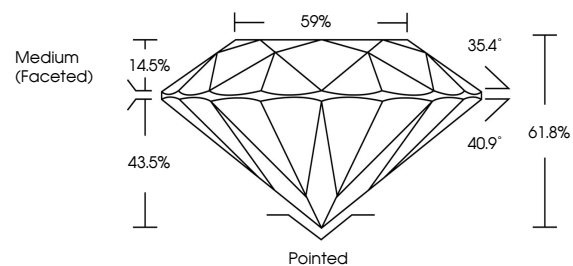
Symmetry **EXCELLENT**

Fluorescence **NONE**

Inscription(s) **IGI LG776690942**

Comments: This Laboratory Grown Diamond was created by Chemical Vapor Deposition (CVD) growth process. Type IIa

PROPORTIONS



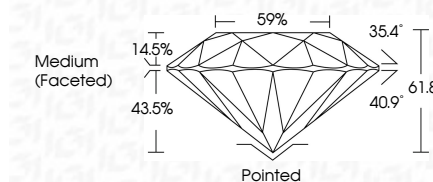
Sample Image Used

COLOR

D E F G H I J Faint Very Light Light

CLARITY

FL	IF	VS ¹⁻²	VS ¹⁻²	SI ¹⁻²	I ¹⁻³
Flawless	Internally Flawless	Very Very Slightly Included	Very Slightly Included	Slightly Included	Included



ADDITIONAL GRADING INFORMATION

Polish **EXCELLENT**

Symmetry **EXCELLENT**

Fluorescence **NONE**

Inscription(s) **IGI LG776690942**

Comments: This Laboratory Grown Diamond was created by Chemical Vapor Deposition (CVD) growth process. Type IIa



IGI



February 26, 2026
IGI Report No LG776690942
ROUND BRILLIANT

9.03 - 9.08 X 5.60 MM

2.84 CARATS
Color Grade G
Clarity Grade VS 1
Cut Grade IDEAL
Depth 61.8%
Table 14.5%
Girdle 43.5%
Medium (Faceted)

Pointed
Polish EXCELLENT
Symmetry EXCELLENT
Fluorescence NONE
Inscriptions(s) IGI LG776690942

Comments: This Laboratory Grown Diamond was created by Chemical Vapor Deposition (CVD) growth process. Type IIa