



ELECTRONIC COPY

LG777607246 Report verification at igi.org



February 20, 2026 IGI Report Number LG777607246 Description LABORATORY GROWN DIAMOND Shape and Cutting Style ROUND BRILLIANT Measurements 6.52 - 6.55 X 4.04 MM GRADING RESULTS Carat Weight 1.07 CARAT Color Grade D Clarity Grade INTERNALLY FLAWLESS Cut Grade IDEAL

February 20, 2026 IGI Report Number LG777607246 Description LABORATORY GROWN DIAMOND Shape and Cutting Style ROUND BRILLIANT Measurements 6.52 - 6.55 X 4.04 MM

GRADING RESULTS

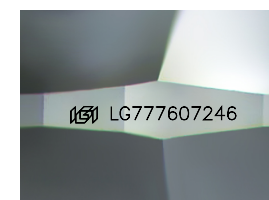
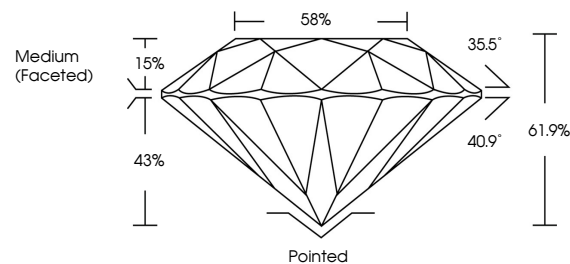
Carat Weight 1.07 CARAT Color Grade D Clarity Grade INTERNALLY FLAWLESS Cut Grade IDEAL

ADDITIONAL GRADING INFORMATION

Polish EXCELLENT Symmetry EXCELLENT Fluorescence NONE Inscription(s) IGI LG777607246

Comments: This Laboratory Grown Diamond was created by Chemical Vapor Deposition (CVD) growth process. Type IIa

PROPORTIONS



Sample Image Used

CLARITY CHARACTERISTICS



KEY TO SYMBOLS

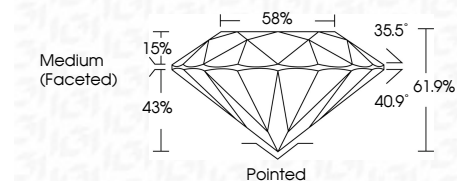
Red symbols indicate internal characteristics. Green symbols indicate external characteristics.

COLOR

D E F G H I J Faint Very Light Light

CLARITY

FL IF VS 1-2 VS 1-2 SI 1-2 I 1-3 Flawless Internally Flawless Very Very Slightly Included Very Slightly Included Slightly Included Included



ADDITIONAL GRADING INFORMATION

Polish EXCELLENT Symmetry EXCELLENT Fluorescence NONE Inscription(s) IGI LG777607246 Comments: This Laboratory Grown Diamond was created by Chemical Vapor Deposition (CVD) growth process. Type IIa



February 20, 2026 IGI Report No LG777607246 ROUND BRILLIANT 6.52 - 6.55 X 4.04 MM 1.07 CARAT D IF IDEAL 61.9% 58% Medium (Faceted) Pointed EXCELLENT EXCELLENT NONE NONE IGI LG777607246 Comments: This Laboratory Grown Diamond was created by Chemical Vapor Deposition (CVD) growth process. Type IIa