



**ELECTRONIC COPY**

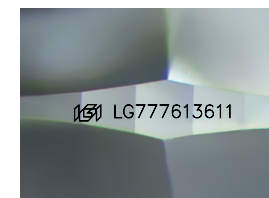
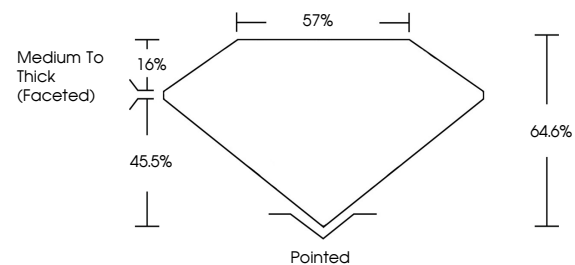
LG777613611  
Report verification at [igi.org](http://igi.org)



February 27, 2026  
IGI Report Number **LG777613611**  
Description **LABORATORY GROWN DIAMOND**  
Shape and Cutting Style **CUSHION MODIFIED BRILLIANT**  
Measurements **9.27 X 8.59 X 5.55 MM**  
**GRADING RESULTS**  
Carat Weight **3.71 CARATS**  
Color Grade **D**  
Clarity Grade **VS 1**

February 27, 2026  
IGI Report Number **LG777613611**  
Description **LABORATORY GROWN DIAMOND**  
Shape and Cutting Style **CUSHION MODIFIED BRILLIANT**  
Measurements **9.27 X 8.59 X 5.55 MM**

**PROPORTIONS**

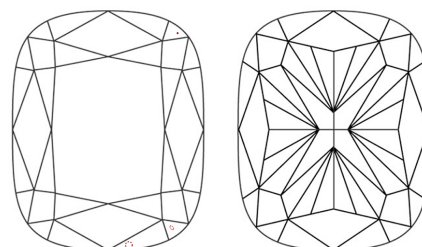


Sample Image Used

**GRADING RESULTS**

Carat Weight **3.71 CARATS**  
Color Grade **D**  
Clarity Grade **VS 1**

**CLARITY CHARACTERISTICS**



**ADDITIONAL GRADING INFORMATION**

Polish **EXCELLENT**  
Symmetry **EXCELLENT**  
Fluorescence **NONE**  
Inscription(s) **IGI LG777613611**

Comments: This Laboratory Grown Diamond was created by Chemical Vapor Deposition (CVD) growth process. Type IIa

**KEY TO SYMBOLS**

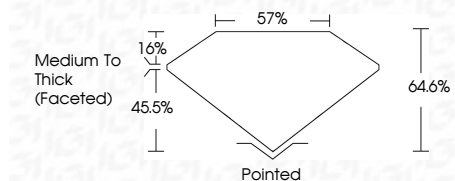
Red symbols indicate internal characteristics.  
Green symbols indicate external characteristics.

**COLOR**

D E F G H I J Faint Very Light Light

**CLARITY**

FL	IF	VS <sup>1-2</sup>	VS <sup>1-2</sup>	SI <sup>1-2</sup>	I <sup>1-3</sup>
Flawless	Internally Flawless	Very Very Slightly Included	Very Slightly Included	Slightly Included	Included



**ADDITIONAL GRADING INFORMATION**

Polish **EXCELLENT**  
Symmetry **EXCELLENT**  
Fluorescence **NONE**  
Inscription(s) **IGI LG777613611**  
Comments: This Laboratory Grown Diamond was created by Chemical Vapor Deposition (CVD) growth process. Type IIa



February 27, 2026  
IGI Report No LG777613611  
**CUSHION MODIFIED BRILLIANT**  
9.27 X 8.59 X 5.55 MM  
3.71 CARATS  
D  
3.71 CARATS  
D  
64.6%  
57%  
Medium To Thick (Faceted)  
Pointed  
EXCELLENT  
EXCELLENT  
NONE  
IGI LG777613611  
Comments: This Laboratory Grown Diamond was created by Chemical Vapor Deposition (CVD) growth process. Type IIa