



ELECTRONIC COPY

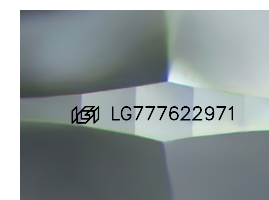
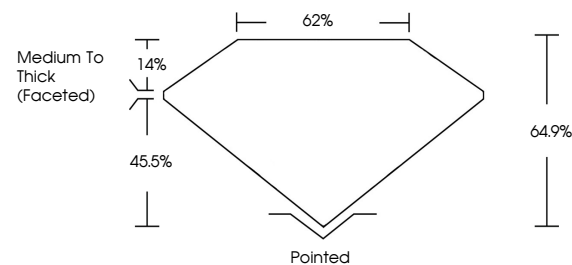
LG777622971
Report verification at igi.org



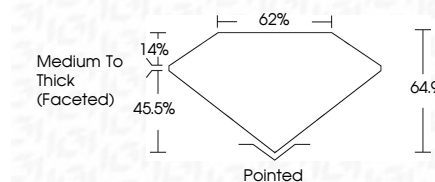
February 27, 2026
IGI Report Number **LG777622971**
Description **LABORATORY GROWN DIAMOND**
Shape and Cutting Style **SQUARE CUSHION MODIFIED BRILLIANT**
Measurements **6.82 X 6.50 X 4.22 MM**
GRADING RESULTS
Carat Weight **1.61 CARAT**
Color Grade **FANCY VIVID GREEN**
Clarity Grade **VVS 2**

February 27, 2026
IGI Report Number **LG777622971**
Description **LABORATORY GROWN DIAMOND**
Shape and Cutting Style **SQUARE CUSHION MODIFIED BRILLIANT**
Measurements **6.82 X 6.50 X 4.22 MM**

PROPORTIONS



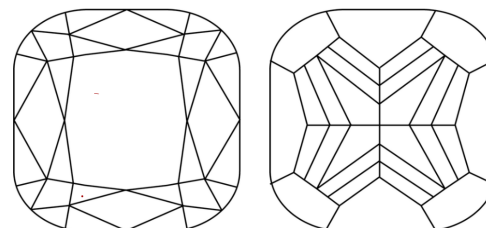
Sample Image Used



GRADING RESULTS

Carat Weight **1.61 CARAT**
Color Grade **FANCY VIVID GREEN**
Clarity Grade **VVS 2**

CLARITY CHARACTERISTICS



COLOR

D E F G H I J Faint Very Light Light

CLARITY

| FL | IF | VVS ¹⁻² | VS ¹⁻² | SI ¹⁻² | I ¹⁻³ |
|----------|---------------------|-----------------------------|------------------------|-------------------|------------------|
| Flawless | Internally Flawless | Very Very Slightly Included | Very Slightly Included | Slightly Included | Included |

ADDITIONAL GRADING INFORMATION

Polish **EXCELLENT**
Symmetry **EXCELLENT**
Fluorescence **VERY SLIGHT**
Inscription(s) **IGI LG777622971**
Comments: This Laboratory Grown Diamond was created by Chemical Vapor Deposition (CVD) growth process. Indications of post-growth treatment.

ADDITIONAL GRADING INFORMATION

Polish **EXCELLENT**
Symmetry **EXCELLENT**
Fluorescence **VERY SLIGHT**
Inscription(s) **IGI LG777622971**

Comments: This Laboratory Grown Diamond was created by Chemical Vapor Deposition (CVD) growth process. Indications of post-growth treatment.

KEY TO SYMBOLS

Red symbols indicate internal characteristics.
Green symbols indicate external characteristics.



February 27, 2026
IGI Report No LG777622971
SQUARE CUSHION MODIFIED BRILLIANT
6.82 X 6.50 X 4.22 MM
1.61 CARAT
FANCY VIVID GREEN
VVS 2
64.9%
62%
Medium To Thick (Faceted)
Pointed
EXCELLENT
EXCELLENT
VERY SLIGHT
IGI LG777622971

Comments: This Laboratory Grown Diamond was created by Chemical Vapor Deposition (CVD) growth process. Indications of post-growth treatment.