



ELECTRONIC COPY

LG777623816
Report verification at igi.org



February 28, 2026

IGI Report Number **LG777623816**

Description **LABORATORY GROWN DIAMOND**

Shape and Cutting Style **ROUND BRILLIANT**

Measurements **6.54 - 6.58 X 4.09 MM**

GRADING RESULTS

Carat Weight **1.08 CARAT**

Color Grade **D**

Clarity Grade **VS 1**

Cut Grade **IDEAL**

February 28, 2026

IGI Report Number **LG777623816**

Description **LABORATORY GROWN DIAMOND**

Shape and Cutting Style **ROUND BRILLIANT**

Measurements **6.54 - 6.58 X 4.09 MM**

GRADING RESULTS

Carat Weight **1.08 CARAT**

Color Grade **D**

Clarity Grade **VS 1**

Cut Grade **IDEAL**

ADDITIONAL GRADING INFORMATION

Polish **EXCELLENT**

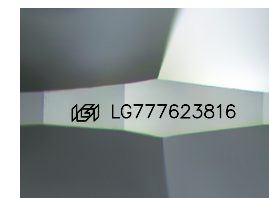
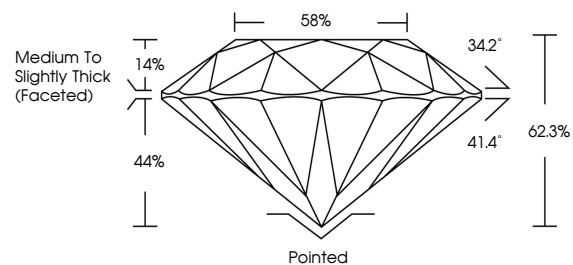
Symmetry **EXCELLENT**

Fluorescence **NONE**

Inscription(s) **IGI LG777623816**

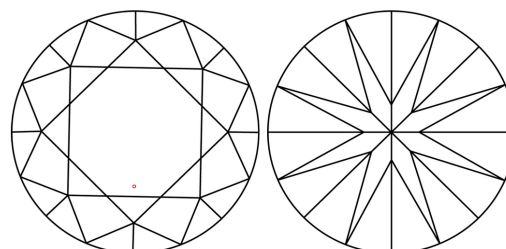
Comments: This Laboratory Grown Diamond was created by Chemical Vapor Deposition (CVD) growth process. Type IIa

PROPORTIONS



Sample Image Used

CLARITY CHARACTERISTICS



KEY TO SYMBOLS

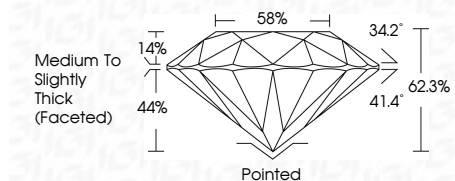
Red symbols indicate internal characteristics.
Green symbols indicate external characteristics.

COLOR

D E F G H I J Faint Very Light Light

CLARITY

FL	IF	VS ¹⁻²	VS ¹⁻²	SI ¹⁻²	I ¹⁻³
Flawless	Internally Flawless	Very Very Slightly Included	Very Slightly Included	Slightly Included	Included



ADDITIONAL GRADING INFORMATION

Polish **EXCELLENT**

Symmetry **EXCELLENT**

Fluorescence **NONE**

Inscription(s) **IGI LG777623816**

Comments: This Laboratory Grown Diamond was created by Chemical Vapor Deposition (CVD) growth process. Type IIa



IGI



February 28, 2026	IGI Report No LG777623816	ROUND BRILLIANT	6.54 - 6.58 X 4.09 MM	1.08 CARAT	D	VS 1	IDEAL	62.3%	58%	Medium To Slightly Thick (Faceted)	Pointed	EXCELLENT	EXCELLENT	NONE	IGI LG777623816
Cutter	Polish	Symmetry	Fluorescence	Inscription(s)											

Comments: This Laboratory Grown Diamond was created by Chemical Vapor Deposition (CVD) growth process. Type IIa