



ELECTRONIC COPY

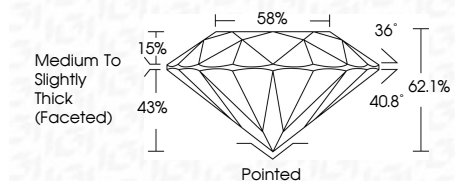
LG777625361 Report verification at igi.org



February 27, 2026 IGI Report Number LG777625361 Description LABORATORY GROWN DIAMOND Shape and Cutting Style ROUND BRILLIANT Measurements 7.28 - 7.31 X 4.53 MM

GRADING RESULTS

Carat Weight 1.51 CARAT Color Grade E Clarity Grade VS 1 Cut Grade IDEAL



ADDITIONAL GRADING INFORMATION

Polish EXCELLENT Symmetry EXCELLENT Fluorescence NONE Inscription(s) LG777625361 Comments: This Laboratory Grown Diamond was created by Chemical Vapor Deposition (CVD) growth process. Type IIa



February 27, 2026 IGI Report No LG777625361 ROUND BRILLIANT 7.28 - 7.31 X 4.53 MM 1.51 CARAT E VS 1 IDEAL 62.1% 58% Medium To Slightly Thick (Faceted) Pointed EXCELLENT EXCELLENT NONE LG777625361

LABORATORY GROWN DIAMOND REPORT

February 27, 2026 IGI Report Number LG777625361 Description LABORATORY GROWN DIAMOND Shape and Cutting Style ROUND BRILLIANT Measurements 7.28 - 7.31 X 4.53 MM

GRADING RESULTS

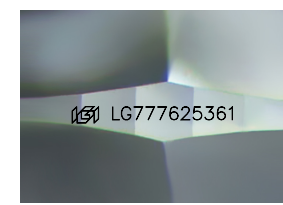
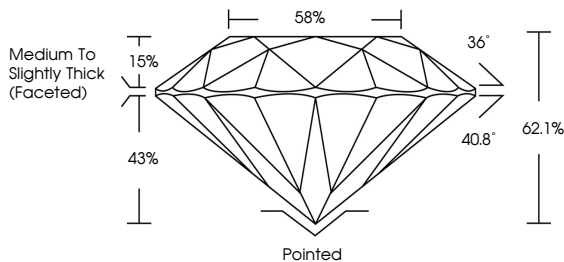
Carat Weight 1.51 CARAT Color Grade E Clarity Grade VS 1 Cut Grade IDEAL

ADDITIONAL GRADING INFORMATION

Polish EXCELLENT Symmetry EXCELLENT Fluorescence NONE Inscription(s) LG777625361

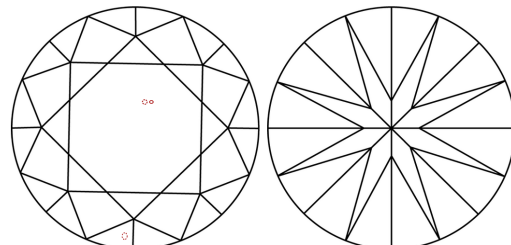
Comments: This Laboratory Grown Diamond was created by Chemical Vapor Deposition (CVD) growth process. Type IIa

PROPORTIONS



Sample Image Used

CLARITY CHARACTERISTICS



KEY TO SYMBOLS

Red symbols indicate internal characteristics. Green symbols indicate external characteristics.

COLOR

D E F G H I J Faint Very Light Light

CLARITY

FL IF VS 1-2 VS 1-2 SI 1-2 I 1-3 Flawless Internally Flawless Very Very Slightly Included Very Slightly Included Slightly Included Included



February 27, 2026 IGI Report No LG777625361 ROUND BRILLIANT 7.28 - 7.31 X 4.53 MM 1.51 CARAT E VS 1 IDEAL 62.1% 58% Medium To Slightly Thick (Faceted) Pointed EXCELLENT EXCELLENT NONE LG777625361

Comments: This Laboratory Grown Diamond was created by Chemical Vapor Deposition (CVD) growth process. Type IIa