



ELECTRONIC COPY

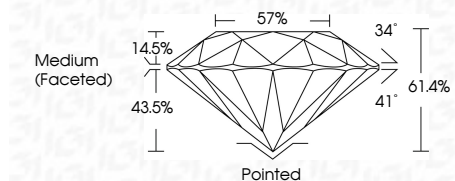
LG777630366 Report verification at igi.org



March 2, 2026 IGI Report Number LG777630366 Description LABORATORY GROWN DIAMOND Shape and Cutting Style ROUND BRILLIANT Measurements 10.19 - 10.22 X 6.27 MM

GRADING RESULTS

Carat Weight 4.01 CARATS Color Grade D Clarity Grade VS 1 Cut Grade IDEAL



ADDITIONAL GRADING INFORMATION

Polish EXCELLENT Symmetry EXCELLENT Fluorescence NONE Inscription(s) LG777630366 Comments: HEARTS & ARROWS This Laboratory Grown Diamond was created by Chemical Vapor Deposition (CVD) growth process. Type IIa



March 2, 2026 IGI Report No LG777630366 ROUND BRILLIANT 10.19 - 10.22 X 6.27 MM 4.01 CARATS D VS 1 IDEAL 61.4% 57% Medium (Faceted) Pointed EXCELLENT EXCELLENT NONE NONE LG777630366

Comments: HEARTS & ARROWS This Laboratory Grown Diamond was created by Chemical Vapor Deposition (CVD) growth process. Type IIa

March 2, 2026 IGI Report Number LG777630366 Description LABORATORY GROWN DIAMOND Shape and Cutting Style ROUND BRILLIANT Measurements 10.19 - 10.22 X 6.27 MM

GRADING RESULTS

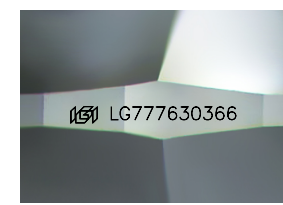
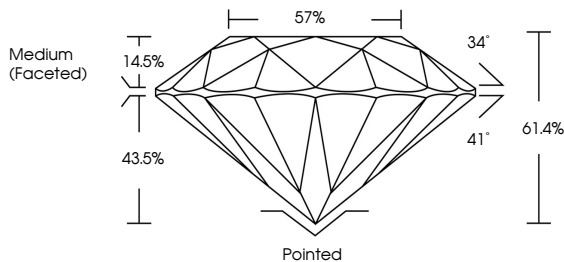
Carat Weight 4.01 CARATS Color Grade D Clarity Grade VS 1 Cut Grade IDEAL

ADDITIONAL GRADING INFORMATION

Polish EXCELLENT Symmetry EXCELLENT Fluorescence NONE Inscription(s) LG777630366

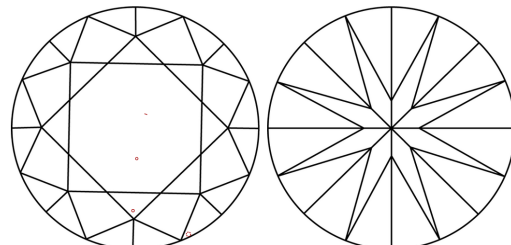
Comments: HEARTS & ARROWS This Laboratory Grown Diamond was created by Chemical Vapor Deposition (CVD) growth process. Type IIa

PROPORTIONS



Sample Image Used

CLARITY CHARACTERISTICS



KEY TO SYMBOLS

Red symbols indicate internal characteristics. Green symbols indicate external characteristics.



COLOR

D E F G H I J Faint Very Light Light

CLARITY

FL IF VS 1-2 VS 1-2 SI 1-2 I 1-3 Flawless Internally Flawless Very Very Slightly Included Very Slightly Included Slightly Included Included

