



ELECTRONIC COPY

LG778616587 Report verification at igi.org



March 3, 2026 IGI Report Number LG778616587 Description LABORATORY GROWN DIAMOND Shape and Cutting Style ROUND BRILLIANT Measurements 7.45 - 7.48 X 4.60 MM GRADING RESULTS Carat Weight 1.58 CARAT Color Grade D Clarity Grade VVS 2 Cut Grade IDEAL

March 3, 2026 IGI Report Number LG778616587 Description LABORATORY GROWN DIAMOND Shape and Cutting Style ROUND BRILLIANT Measurements 7.45 - 7.48 X 4.60 MM

GRADING RESULTS

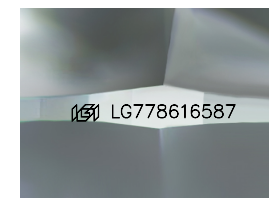
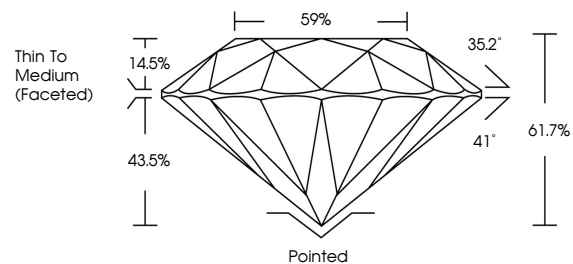
Carat Weight 1.58 CARAT Color Grade D Clarity Grade VVS 2 Cut Grade IDEAL

ADDITIONAL GRADING INFORMATION

Polish EXCELLENT Symmetry EXCELLENT Fluorescence NONE Inscription(s) IGI LG778616587

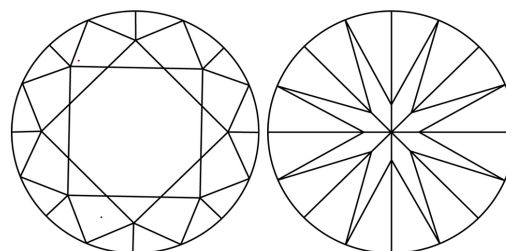
Comments: This Laboratory Grown Diamond was created by Chemical Vapor Deposition (CVD) growth process. Type IIa

PROPORTIONS



Sample Image Used

CLARITY CHARACTERISTICS



KEY TO SYMBOLS

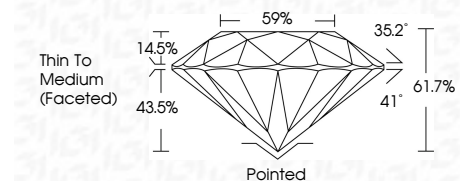
Red symbols indicate internal characteristics. Green symbols indicate external characteristics.

COLOR

D E F G H I J Faint Very Light Light

CLARITY

Table with columns: FL, IF, VVS 1-2, VS 1-2, SI 1-2, I 1-3 and corresponding descriptions: Flawless, Internally Flawless, Very Very Slightly Included, Very Slightly Included, Slightly Included, Included



ADDITIONAL GRADING INFORMATION

Polish EXCELLENT Symmetry EXCELLENT Fluorescence NONE Inscription(s) IGI LG778616587 Comments: This Laboratory Grown Diamond was created by Chemical Vapor Deposition (CVD) growth process. Type IIa



March 3, 2026 IGI Report No LG778616587 ROUND BRILLIANT 7.45 - 7.48 X 4.60 MM 1.58 CARAT D VVS 2 IDEAL 61.7% 59% Thin To Medium (Faceted) Pointed EXCELLENT EXCELLENT NONE NONE IGI LG778616587 Comments: This Laboratory Grown Diamond was created by Chemical Vapor Deposition (CVD) growth process. Type IIa