



March 31, 2026

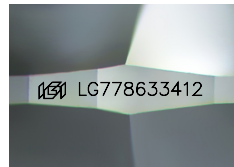
IGI Report Number **LG778633412**

**ROUND BRILLIANT
LABORATORY GROWN DIAMOND
5.95 - 5.96 X 3.63 MM**

Carat Weight	0.79 CARAT
Color Grade	D
Clarity Grade	VVS 2
Cut Grade	IDEAL
Polish	EXCELLENT
Symmetry	EXCELLENT
Fluorescence	NONE
Inscription(s)	IGI LG778633412

LABORATORY GROWN DIAMOND REPORT

March 31, 2026	
IGI Report Number	LG778633412
Description	LABORATORY GROWN DIAMOND
Shape and Cutting Style	ROUND BRILLIANT
Measurements	5.95 - 5.96 X 3.63 MM



Sample Image Used

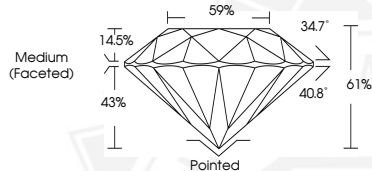
GRADING RESULTS

Carat Weight	0.79 CARAT
Color Grade	D
Clarity Grade	VVS 2
Cut Grade	IDEAL

ADDITIONAL GRADING INFORMATION

Polish	EXCELLENT
Symmetry	EXCELLENT
Fluorescence	NONE
Inscription(s)	IGI LG778633412

Comments: As Grown - No indication of post-growth treatment. This Laboratory Grown Diamond was created by High Pressure High Temperature (HPHT) growth process. Type II



March 31, 2026

IGI Report Number **LG778633412**

**ROUND BRILLIANT
LABORATORY GROWN DIAMOND
5.95 - 5.96 X 3.63 MM**

Carat Weight	0.79 CARAT
Color Grade	D
Clarity Grade	VVS 2
Cut Grade	IDEAL
Polish	EXCELLENT
Symmetry	EXCELLENT
Fluorescence	NONE
Inscription(s)	IGI LG778633412

Comments: As Grown - No indication of post-growth treatment. This Laboratory Grown Diamond was created by High Pressure High Temperature (HPHT) growth process. Type II

THIS DOCUMENT WAS PRODUCED WITH THE FOLLOWING SECURITY MEASURES: SPECIAL DOCUMENT PAPER, INK SCREENS, WATERMARK BACKGROUND DESIGNS, HOLOGRAM AND OTHER SECURITY FEATURES NOT LISTED AND DO EXCEED DOCUMENT SECURITY INDUSTRY GUIDELINES.