



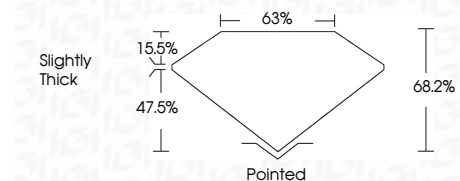
**ELECTRONIC COPY**

LG778640448  
Report verification at igi.org



March 17, 2026  
IGI Report Number **LG778640448**  
Description **LABORATORY GROWN DIAMOND**  
Shape and Cutting Style **SQUARE EMERALD CUT**  
Measurements **6.91 X 6.82 X 4.65 MM**

**GRADING RESULTS**  
Carat Weight **2.01 CARATS**  
Color Grade **FANCY VIVID PINK**  
Clarity Grade **VVS 2**



**ADDITIONAL GRADING INFORMATION**  
Polish **EXCELLENT**  
Symmetry **EXCELLENT**  
Fluorescence **STRONG**  
Inscription(s) **(IGI) LG778640448**  
Comments: This Laboratory Grown Diamond was created by Chemical Vapor Deposition (CVD) growth process. Indications of post-growth treatment.



March 17, 2026  
IGI Report No LG778640448  
**SQUARE EMERALD CUT**  
6.91 X 6.82 X 4.65 MM  
2.01 CARATS  
FANCY VIVID PINK  
VVS 2  
68.2%  
63%  
Slightly Thick  
Pointed  
EXCELLENT  
EXCELLENT  
STRONG  
(IGI) LG778640448  
Comments: This Laboratory Grown Diamond was created by Chemical Vapor Deposition (CVD) growth process. Indications of post-growth treatment.

**LABORATORY GROWN DIAMOND REPORT**

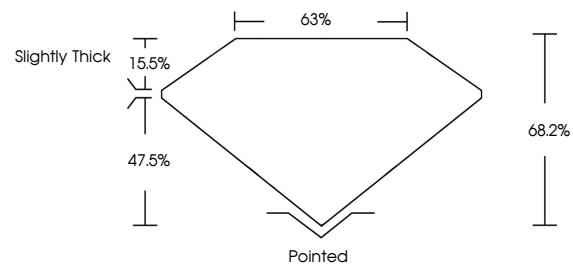
March 17, 2026  
IGI Report Number **LG778640448**  
Description **LABORATORY GROWN DIAMOND**  
Shape and Cutting Style **SQUARE EMERALD CUT**  
Measurements **6.91 X 6.82 X 4.65 MM**

**GRADING RESULTS**  
Carat Weight **2.01 CARATS**  
Color Grade **FANCY VIVID PINK**  
Clarity Grade **VVS 2**

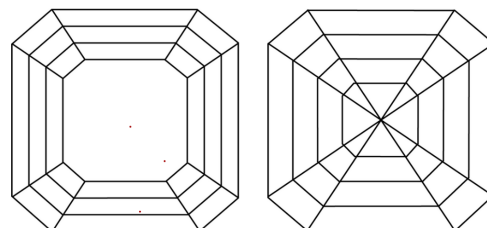
**ADDITIONAL GRADING INFORMATION**  
Polish **EXCELLENT**  
Symmetry **EXCELLENT**  
Fluorescence **STRONG**  
Inscription(s) **(IGI) LG778640448**

Comments: This Laboratory Grown Diamond was created by Chemical Vapor Deposition (CVD) growth process. Indications of post-growth treatment.

**PROPORTIONS**

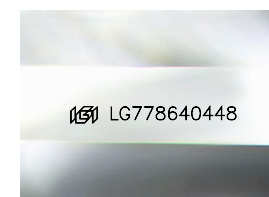


**CLARITY CHARACTERISTICS**



**KEY TO SYMBOLS**

Red symbols indicate internal characteristics.  
Green symbols indicate external characteristics.



Sample Image Used

**COLOR**

D E F G H I J Faint Very Light Light

**CLARITY**

| FL       | IF                  | VVS <sup>1-2</sup>          | VS <sup>1-2</sup>      | SI <sup>1-2</sup> | I <sup>1-3</sup> |
|----------|---------------------|-----------------------------|------------------------|-------------------|------------------|
| Flawless | Internally Flawless | Very Very Slightly Included | Very Slightly Included | Slightly Included | Included         |

