



ELECTRONIC COPY

LG778648535
Report verification at igi.org

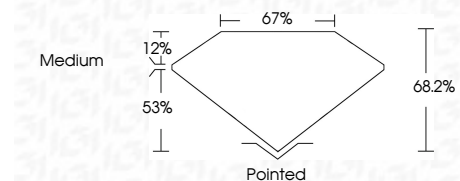


March 1, 2026
IGI Report Number LG778648535
Description LABORATORY GROWN DIAMOND
Shape and Cutting Style CUT CORNERED RECTANGULAR MODIFIED BRILLIANT

Measurements 11.36 X 7.84 X 5.35 MM

GRADING RESULTS

Carat Weight 4.05 CARATS
Color Grade E
Clarity Grade VVS 2

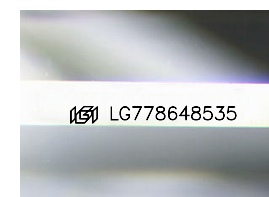


ADDITIONAL GRADING INFORMATION

Polish EXCELLENT
Symmetry EXCELLENT
Fluorescence NONE
Inscription(s) IGI LG778648535
Comments: This Laboratory Grown Diamond was created by Chemical Vapor Deposition (CVD) growth process. Type IIa

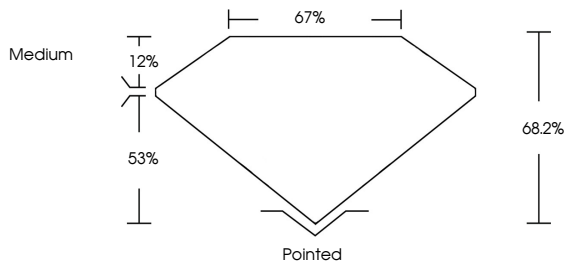


March 1, 2026
IGI Report No LG778648535
CUT CORNERED RECT. MODIFIED BRILLIANT
4.05 CARATS E
11.36 X 7.84 X 5.35 MM
Color Grade VVS 2
Depth 68.2%
Table 12%
Girdle 67%
Medium
Pointed
EXCELLENT
EXCELLENT
NONE
IGI LG778648535
Comments: This Laboratory Grown Diamond was created by Chemical Vapor Deposition (CVD) growth process. Type IIa

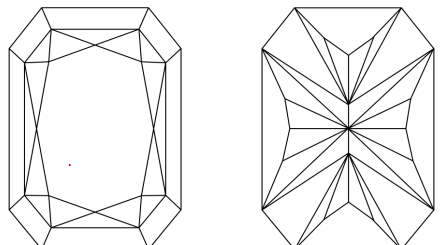


Sample Image Used

PROPORTIONS



CLARITY CHARACTERISTICS



KEY TO SYMBOLS
Red symbols indicate internal characteristics.
Green symbols indicate external characteristics.

COLOR

Color scale table with categories D, E, F, G, H, I, J, Faint, Very Light, Light

CLARITY

Clarity scale table with categories FL, IF, VVS 1-2, VS 1-2, SI 1-2, I 1-3, Flawless, Internally Flawless, Very Very Slightly Included, Very Slightly Included, Slightly Included, Included

