



ELECTRONIC COPY

LG778648679
Report verification at igi.org

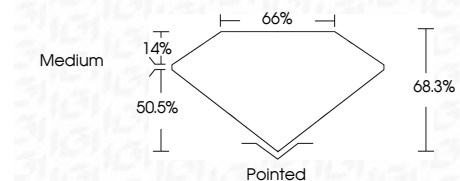


March 5, 2026
IGI Report Number LG778648679
Description LABORATORY GROWN DIAMOND
Shape and Cutting Style CUT CORNERED RECTANGULAR MODIFIED BRILLIANT

Measurements 10.79 X 7.82 X 5.34 MM

GRADING RESULTS

Carat Weight 3.93 CARATS
Color Grade E
Clarity Grade VVS 2

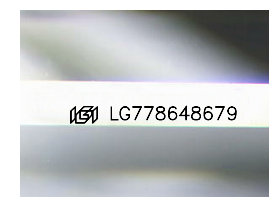


ADDITIONAL GRADING INFORMATION

Polish EXCELLENT
Symmetry EXCELLENT
Fluorescence NONE
Inscription(s) IGI LG778648679
Comments: This Laboratory Grown Diamond was created by Chemical Vapor Deposition (CVD) growth process. Type IIa

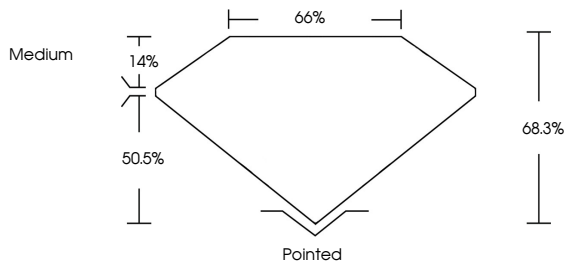


March 5, 2026
IGI Report No LG778648679
CUT CORNERED RECT. MODIFIED BRILLIANT
3.93 CARATS E
10.79 X 7.82 X 5.34 MM
VVS 2 68.3% 50.5%
Medium Pointed
EXCELLENT EXCELLENT NONE
IGI LG778648679
Comments: This Laboratory Grown Diamond was created by Chemical Vapor Deposition (CVD) growth process. Type IIa

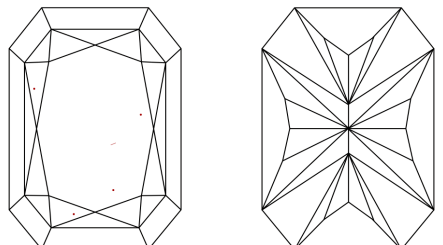


Sample Image Used

PROPORTIONS



CLARITY CHARACTERISTICS



KEY TO SYMBOLS

Red symbols indicate internal characteristics.
Green symbols indicate external characteristics.

COLOR

D E F G H I J Faint Very Light Light

CLARITY

FL IF VVS 1-2 VS 1-2 SI 1-2 I 1-3
Flawless Internally Flawless Very Very Slightly Included Very Slightly Included Slightly Included Included

