



ELECTRONIC COPY

LG778648881
Report verification at igi.org



March 1, 2026

IGI Report Number **LG778648881**

Description **LABORATORY GROWN DIAMOND**

Shape and Cutting Style **ROUND BRILLIANT**

Measurements **8.24 - 8.30 X 4.96 MM**

GRADING RESULTS

Carat Weight **2.09 CARATS**

Color Grade **E**

Clarity Grade **VS 1**

Cut Grade **IDEAL**

March 1, 2026

IGI Report Number **LG778648881**

Description **LABORATORY GROWN DIAMOND**

Shape and Cutting Style **ROUND BRILLIANT**

Measurements **8.24 - 8.30 X 4.96 MM**

GRADING RESULTS

Carat Weight **2.09 CARATS**

Color Grade **E**

Clarity Grade **VS 1**

Cut Grade **IDEAL**

ADDITIONAL GRADING INFORMATION

Polish **EXCELLENT**

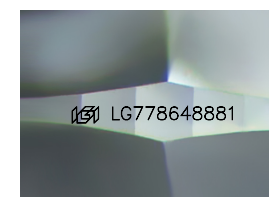
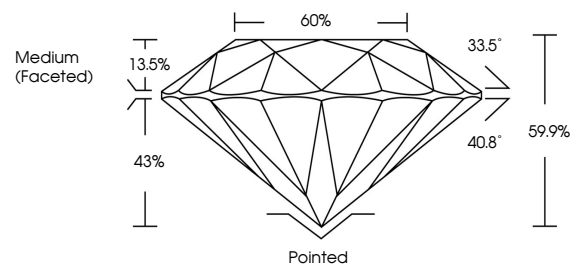
Symmetry **EXCELLENT**

Fluorescence **NONE**

Inscription(s) **IGI LG778648881**

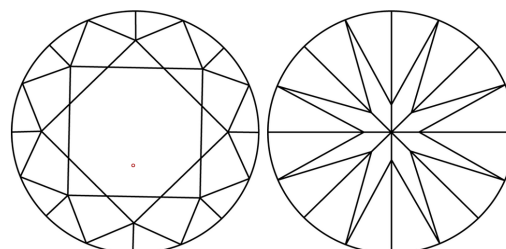
Comments: This Laboratory Grown Diamond was created by Chemical Vapor Deposition (CVD) growth process. Type IIa

PROPORTIONS



Sample Image Used

CLARITY CHARACTERISTICS



KEY TO SYMBOLS

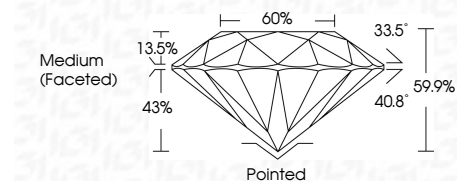
Red symbols indicate internal characteristics.
Green symbols indicate external characteristics.

COLOR

D E F G H I J Faint Very Light Light

CLARITY

FL	IF	VS ¹⁻²	VS ¹⁻²	SI ¹⁻²	I ¹⁻³
Flawless	Internally Flawless	Very Very Slightly Included	Very Slightly Included	Slightly Included	Included



ADDITIONAL GRADING INFORMATION

Polish **EXCELLENT**

Symmetry **EXCELLENT**

Fluorescence **NONE**

Inscription(s) **IGI LG778648881**

Comments: This Laboratory Grown Diamond was created by Chemical Vapor Deposition (CVD) growth process. Type IIa



IGI



March 1, 2026
IGI Report No LG778648881
ROUND BRILLIANT

8.24 - 8.30 X 4.96 MM

2.09 CARATS
E

Color Grade
VS 1

Clarity Grade
IDEAL

Depth
59.9%

Table
60%

Girdle
Medium (Faceted)

Culet
Pointed

Polish
EXCELLENT

Symmetry
EXCELLENT

Fluorescence
NONE

Inscription(s)
IGI LG778648881

Comments: This Laboratory Grown Diamond was created by Chemical Vapor Deposition (CVD) growth process. Type IIa