



February 25, 2026

**IGI Report Number LG778649483**  
**CUSHION MODIFIED BRILLIANT**  
**LABORATORY GROWN DIAMOND**  
**5.34 X 5.06 X 3.01 MM**

Carat Weight **0.66 CARAT**  
Color Grade **D**  
Clarity Grade **VVS 2**  
Polish **VERY GOOD**  
Symmetry **EXCELLENT**  
Fluorescence **NONE**  
Inscription(s) **IGI LG778649483**

Comments: As Grown - No indication of post-growth treatment. This Laboratory Grown Diamond was created by High Pressure High Temperature (HPHT) growth process. Type II

**LABORATORY GROWN DIAMOND REPORT**

February 25, 2026

IGI Report Number

**LG778649483**

Description

**LABORATORY GROWN DIAMOND**

Shape and Cutting Style

**CUSHION MODIFIED BRILLIANT**

Measurements

**5.34 X 5.06 X 3.01 MM**

**GRADING RESULTS**

Carat Weight

**0.66 CARAT**

Color Grade

**D**

Clarity Grade

**VVS 2**

**ADDITIONAL GRADING INFORMATION**

Polish

**VERY GOOD**

Symmetry

**EXCELLENT**

Fluorescence

**NONE**

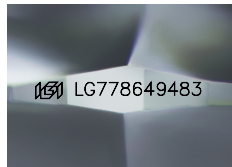
Inscription(s)

**IGI LG778649483**

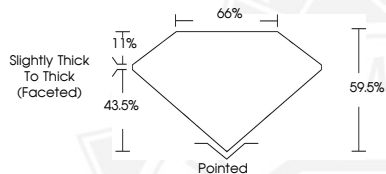
Comments: As Grown - No indication of post-growth treatment.

This Laboratory Grown Diamond was created by High Pressure High Temperature (HPHT) growth process.

Type II



Sample Image Used



February 25, 2026

**IGI Report Number LG778649483**  
**CUSHION MODIFIED BRILLIANT**  
**LABORATORY GROWN DIAMOND**  
**5.34 X 5.06 X 3.01 MM**

Carat Weight **0.66 CARAT**  
Color Grade **D**  
Clarity Grade **VVS 2**  
Polish **VERY GOOD**  
Symmetry **EXCELLENT**  
Fluorescence **NONE**  
Inscription(s) **IGI LG778649483**

Comments: As Grown - No indication of post-growth treatment. This Laboratory Grown Diamond was created by High Pressure High Temperature (HPHT) growth process. Type II



THIS DOCUMENT WAS PRODUCED WITH THE FOLLOWING SECURITY MEASURES: SPECIAL DOCUMENT PAPER, INK SCREENS, WATERMARK, BACKGROUND DESIGNS, HOLOGRAM AND OTHER SECURITY FEATURES NOT LISTED AND DO EXCEED DOCUMENT SECURITY INDUSTRY GUIDELINES.