



ELECTRONIC COPY

LABORATORY GROWN DIAMOND REPORT

March 2, 2026 IGI Report Number LG778650031 Description LABORATORY GROWN DIAMOND Shape and Cutting Style CUT CORNERED RECTANGULAR MODIFIED BRILLIANT Measurements 10.96 X 7.92 X 5.41 MM

GRADING RESULTS

Carat Weight 4.09 CARATS Color Grade F Clarity Grade VVS 2

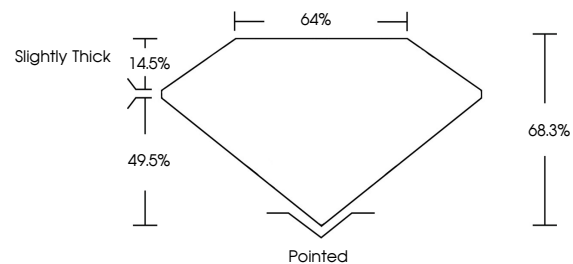
ADDITIONAL GRADING INFORMATION

Polish EXCELLENT Symmetry EXCELLENT Fluorescence NONE

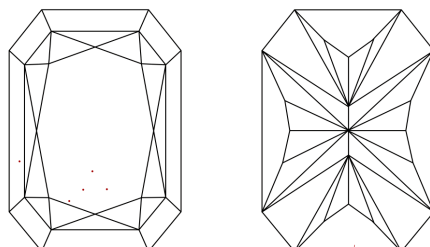
Inscription(s) IGI LG778650031

Comments: This Laboratory Grown Diamond was created by Chemical Vapor Deposition (CVD) growth process. Type IIa

PROPORTIONS

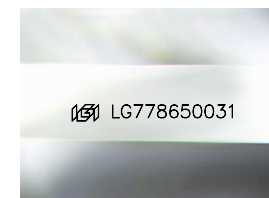


CLARITY CHARACTERISTICS



KEY TO SYMBOLS

Red symbols indicate internal characteristics. Green symbols indicate external characteristics.



Sample Image Used

COLOR

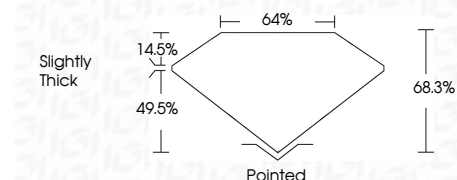
D E F G H I J Faint Very Light Light

CLARITY

FL IF VVS 1-2 VS 1-2 SI 1-2 I 1-3 Flawless Internally Flawless Very Very Slightly Included Very Slightly Included Slightly Included Included



March 2, 2026 IGI Report Number LG778650031 Description LABORATORY GROWN DIAMOND Shape and Cutting Style CUT CORNERED RECTANGULAR MODIFIED BRILLIANT Measurements 10.96 X 7.92 X 5.41 MM GRADING RESULTS Carat Weight 4.09 CARATS Color Grade F Clarity Grade VVS 2



ADDITIONAL GRADING INFORMATION

Polish EXCELLENT Symmetry EXCELLENT Fluorescence NONE Inscription(s) IGI LG778650031 Comments: This Laboratory Grown Diamond was created by Chemical Vapor Deposition (CVD) growth process. Type IIa



March 2, 2026 IGI Report No LG778650031 CUT CORNERED RECT. MODIFIED BRILLIANT 4.09 CARATS F VVS 2 68.3% 49.5% Slightly Thick Pointed EXCELLENT EXCELLENT NONE IGI LG778650031 Comments: This Laboratory Grown Diamond was created by Chemical Vapor Deposition (CVD) growth process. Type IIa