



ELECTRONIC COPY

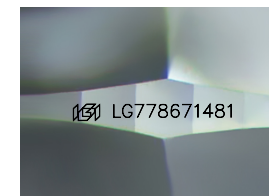
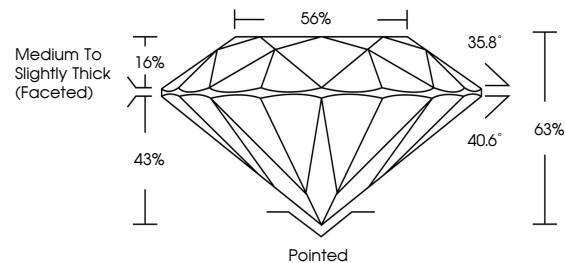
LG778671481
Report verification at igi.org



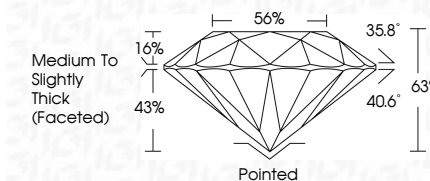
March 28, 2026
IGI Report Number LG778671481
Description LABORATORY GROWN DIAMOND
Shape and Cutting Style ROUND BRILLIANT
Measurements 10.82 - 10.86 X 6.83 MM
GRADING RESULTS
Carat Weight 5.01 CARATS
Color Grade F
Clarity Grade VVS 2
Cut Grade EXCELLENT

March 28, 2026
IGI Report Number LG778671481
Description LABORATORY GROWN DIAMOND
Shape and Cutting Style ROUND BRILLIANT
Measurements 10.82 - 10.86 X 6.83 MM
GRADING RESULTS
Carat Weight 5.01 CARATS
Color Grade F
Clarity Grade VVS 2
Cut Grade EXCELLENT

PROPORTIONS



Sample Image Used



ADDITIONAL GRADING INFORMATION

Polish EXCELLENT
Symmetry EXCELLENT
Fluorescence NONE
Inscription(s) IGI LG778671481

ADDITIONAL GRADING INFORMATION

Polish EXCELLENT
Symmetry EXCELLENT
Fluorescence NONE
Inscription(s) IGI LG778671481
Comments: This Laboratory Grown Diamond was created by Chemical Vapor Deposition (CVD) growth process. Type IIa

COLOR

D E F G H I J Faint Very Light Light

CLARITY

FL IF VS 1-2 VS 1-2 SI 1-2 I 1-3
Flawless Internally Flawless Very Very Slightly Included Very Slightly Included Slightly Included Included



IGI

March 28, 2026
IGI Report No LG778671481
ROUND BRILLIANT
10.82 - 10.86 X 6.83 MM
5.01 CARATS
Color Grade F
Clarity Grade VVS 2
Depth 65%
Table 56%
Medium To Slightly Thick (Faceted)
Cutler Pointed
Polish EXCELLENT
Symmetry EXCELLENT
Fluorescence NONE
Inscriptions(s) IGI LG778671481
Comments: This Laboratory Grown Diamond was created by Chemical Vapor Deposition (CVD) growth process. Type IIa