

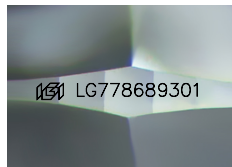


February 26, 2026

IGI Report Number LG778689301
CUSHION MODIFIED BRILLIANT
LABORATORY GROWN DIAMOND
6.90 X 5.37 X 3.52 MM

LABORATORY GROWN DIAMOND REPORT

February 26, 2026
IGI Report Number **LG778689301**
Description **LABORATORY GROWN DIAMOND**
Shape and Cutting Style **CUSHION MODIFIED BRILLIANT**
Measurements **6.90 X 5.37 X 3.52 MM**



Sample Image Used

0.98 CARAT
D
VVS 2
EXCELLENT
EXCELLENT
EXCELLENT
NONE
IGI LG778689301

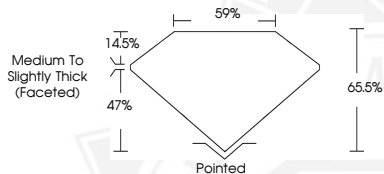
GRADING RESULTS

Carat Weight **0.98 CARAT**
Color Grade **D**
Clarity Grade **VVS 2**
Cut Grade **EXCELLENT**

ADDITIONAL GRADING INFORMATION

Polish **EXCELLENT**
Symmetry **EXCELLENT**
Fluorescence **NONE**
Inscription(s) **IGI LG778689301**

Comments: As Grown - No indication of post-growth treatment. This Laboratory Grown Diamond was created by High Pressure High Temperature (HPHT) growth process. Type II



February 26, 2026

IGI Report Number LG778689301
CUSHION MODIFIED BRILLIANT
LABORATORY GROWN DIAMOND
6.90 X 5.37 X 3.52 MM

0.98 CARAT
D
VVS 2
EXCELLENT
EXCELLENT
EXCELLENT
NONE
IGI LG778689301

Comments: As Grown - No indication of post-growth treatment. This Laboratory Grown Diamond was created by High Pressure High Temperature (HPHT) growth process. Type II

THIS DOCUMENT WAS PRODUCED WITH THE FOLLOWING SECURITY MEASURES: SPECIAL DOCUMENT PAPER, INK SCREENS, WATERMARK BACKGROUND DESIGNS, HOLOGRAM AND OTHER SECURITY FEATURES NOT LISTED AND DO EXCEED DOCUMENT SECURITY INDUSTRY GUIDELINES.