



March 7, 2026

IGI Report Number **LG778694823**

**OVAL BRILLIANT  
LABORATORY GROWN DIAMOND  
5.17 X 3.61 X 2.30 MM**

Carat Weight	<b>0.26 CARAT</b>
Color Grade	<b>E</b>
Clarity Grade	<b>VS 1</b>
Polish	<b>VERY GOOD</b>
Symmetry	<b>VERY GOOD</b>
Fluorescence	<b>NONE</b>
Inscription(s)	<b>IGI LG778694823</b>

Comments: As Grown - No indication of post-growth treatment. This Laboratory Grown Diamond was created by High Pressure High Temperature (HPHT) growth process. Type II

**LABORATORY GROWN DIAMOND REPORT**

March 7, 2026  
IGI Report Number **LG778694823**  
Description **LABORATORY GROWN DIAMOND**  
Shape and Cutting Style **OVAL BRILLIANT**  
Measurements **5.17 X 3.61 X 2.30 MM**

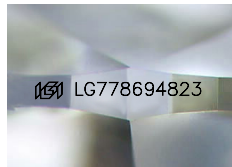
**GRADING RESULTS**

Carat Weight **0.26 CARAT**  
Color Grade **E**  
Clarity Grade **VS 1**

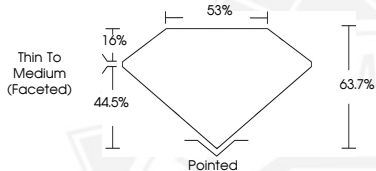
**ADDITIONAL GRADING INFORMATION**

Polish **VERY GOOD**  
Symmetry **VERY GOOD**  
Fluorescence **NONE**  
Inscription(s) **IGI LG778694823**

Comments: As Grown - No indication of post-growth treatment. This Laboratory Grown Diamond was created by High Pressure High Temperature (HPHT) growth process. Type II



Sample Image Used



March 7, 2026

IGI Report Number **LG778694823**

**OVAL BRILLIANT  
LABORATORY GROWN DIAMOND  
5.17 X 3.61 X 2.30 MM**

Carat Weight	<b>0.26 CARAT</b>
Color Grade	<b>E</b>
Clarity Grade	<b>VS 1</b>
Polish	<b>VERY GOOD</b>
Symmetry	<b>VERY GOOD</b>
Fluorescence	<b>NONE</b>
Inscription(s)	<b>IGI LG778694823</b>

Comments: As Grown - No indication of post-growth treatment. This Laboratory Grown Diamond was created by High Pressure High Temperature (HPHT) growth process. Type II



THIS DOCUMENT WAS PRODUCED WITH THE FOLLOWING SECURITY MEASURES: SPECIAL DOCUMENT PAPER, INK SCREENS, WATERMARK, BACKGROUND DESIGNS, HOLOGRAM AND OTHER SECURITY FEATURES NOT LISTED AND DO EXCEED DOCUMENT SECURITY INDUSTRY GUIDELINES.