



**LABORATORY GROWN DIAMOND REPORT**

March 8, 2026  
 IGI Report Number **LG778696626**  
 Description **LABORATORY GROWN DIAMOND**  
 Shape and Cutting Style **EMERALD CUT**  
 Measurements **5.47 X 3.91 X 2.38 MM**

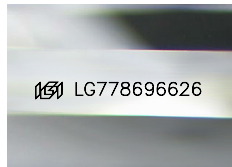
**GRADING RESULTS**

Carat Weight **0.49 CARAT**  
 Color Grade **G**  
 Clarity Grade **VS 1**

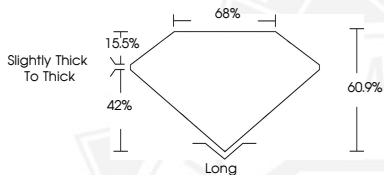
**ADDITIONAL GRADING INFORMATION**

Polish **VERY GOOD**  
 Symmetry **VERY GOOD**  
 Fluorescence **NONE**  
 Inscription(s) **IGI LG778696626**

Comments: As Grown - No indication of post-growth treatment. This Laboratory Grown Diamond was created by High Pressure High Temperature (HPHT) growth process.  
 Type II  
 Faint Blue



Sample Image Used



March 8, 2026  
 IGI Report Number **LG778696626**  
**EMERALD CUT**  
**LABORATORY GROWN DIAMOND**  
**5.47 X 3.91 X 2.38 MM**  
 Carat Weight **0.49 CARAT**  
 Color Grade **G**  
 Clarity Grade **VS 1**  
 Polish **VERY GOOD**  
 Symmetry **VERY GOOD**  
 Fluorescence **NONE**  
 Inscription(s) **IGI LG778696626**

Comments: As Grown - No indication of post-growth treatment. This Laboratory Grown Diamond was created by High Pressure High Temperature (HPHT) growth process. Type II Faint Blue



March 8, 2026  
 IGI Report Number **LG778696626**  
**EMERALD CUT**  
**LABORATORY GROWN DIAMOND**  
**5.47 X 3.91 X 2.38 MM**  
 Carat Weight **0.49 CARAT**  
 Color Grade **G**  
 Clarity Grade **VS 1**  
 Polish **VERY GOOD**  
 Symmetry **VERY GOOD**  
 Fluorescence **NONE**  
 Inscription(s) **IGI LG778696626**

Comments: As Grown - No indication of post-growth treatment. This Laboratory Grown Diamond was created by High Pressure High Temperature (HPHT) growth process. Type II Faint Blue



THIS DOCUMENT WAS PRODUCED WITH THE FOLLOWING SECURITY MEASURES: SPECIAL DOCUMENT PAPER, INK SCREENS, WATERMARK, BACKGROUND DESIGNS, HOLOGRAM AND OTHER SECURITY FEATURES NOT LISTED AND DO EXCEED DOCUMENT SECURITY INDUSTRY GUIDELINES.