



March 7, 2026

IGI Report Number **LG778696834**

**PEAR BRILLIANT**

**LABORATORY GROWN DIAMOND**

**6.35 X 4.25 X 2.60 MM**

Carat Weight	<b>0.41 CARAT</b>
Color Grade	<b>E</b>
Clarity Grade	<b>VS 1</b>
Polish	<b>VERY GOOD</b>
Symmetry	<b>GOOD</b>
Fluorescence	<b>NONE</b>
Inscription(s)	<b>IGI LG778696834</b>

Comments: As Grown - No indication of post-growth treatment. This Laboratory Grown Diamond was created by High Pressure High Temperature (HPHT) growth process. Type II

**LABORATORY GROWN DIAMOND REPORT**

March 7, 2026

IGI Report Number

**LG778696834**

Description

**LABORATORY GROWN DIAMOND**

Shape and Cutting Style

**PEAR BRILLIANT**

Measurements

**6.35 X 4.25 X 2.60 MM**

**GRADING RESULTS**

Carat Weight

**0.41 CARAT**

Color Grade

**E**

Clarity Grade

**VS 1**

**ADDITIONAL GRADING INFORMATION**

Polish

**VERY GOOD**

Symmetry

**GOOD**

Fluorescence

**NONE**

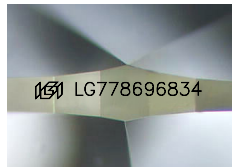
Inscription(s)

**IGI LG778696834**

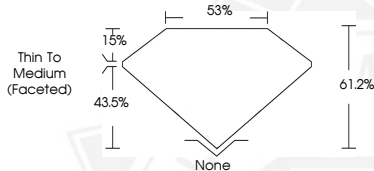
Comments: As Grown - No indication of post-growth treatment.

This Laboratory Grown Diamond was created by High Pressure High Temperature (HPHT) growth process.

Type II



Sample Image Used



March 7, 2026

IGI Report Number **LG778696834**

**PEAR BRILLIANT**

**LABORATORY GROWN DIAMOND**

**6.35 X 4.25 X 2.60 MM**

Carat Weight	<b>0.41 CARAT</b>
Color Grade	<b>E</b>
Clarity Grade	<b>VS 1</b>
Polish	<b>VERY GOOD</b>
Symmetry	<b>GOOD</b>
Fluorescence	<b>NONE</b>
Inscription(s)	<b>IGI LG778696834</b>

Comments: As Grown - No indication of post-growth treatment. This Laboratory Grown Diamond was created by High Pressure High Temperature (HPHT) growth process. Type II



THIS DOCUMENT WAS PRODUCED WITH THE FOLLOWING SECURITY MEASURES: SPECIAL DOCUMENT PAPER, INK SCREENS, WATERMARK, BACKGROUND DESIGNS, HOLOGRAM AND OTHER SECURITY FEATURES NOT LISTED AND DO EXCEED DOCUMENT SECURITY INDUSTRY GUIDELINES.