



ELECTRONIC COPY

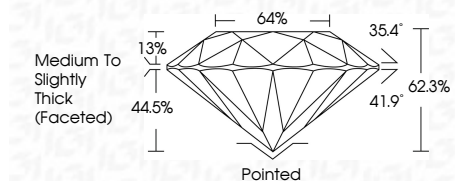
LG779603543 Report verification at igi.org



March 3, 2026 IGI Report Number LG779603543 Description LABORATORY GROWN DIAMOND Shape and Cutting Style ROUND BRILLIANT Measurements 6.33 - 6.35 X 3.95 MM

GRADING RESULTS

Carat Weight 1.00 CARAT Color Grade D Clarity Grade VVS 2 Cut Grade VERY GOOD



ADDITIONAL GRADING INFORMATION

Polish EXCELLENT Symmetry EXCELLENT Fluorescence NONE Inscription(s) (IGI) LG779603543 Comments: This Laboratory Grown Diamond was created by Chemical Vapor Deposition (CVD) growth process. Type IIa



March 3, 2026 IGI Report No LG779603543 ROUND BRILLIANT 6.33 - 6.35 X 3.95 MM 1.00 CARAT D VVS 2 VERY GOOD 62.3% 64% Medium To Slightly Thick (Faceted) Pointed EXCELLENT EXCELLENT NONE NONE (IGI) LG779603543 Comments: This Laboratory Grown Diamond was created by Chemical Vapor Deposition (CVD) growth process. Type IIa

March 3, 2026 IGI Report Number LG779603543 Description LABORATORY GROWN DIAMOND Shape and Cutting Style ROUND BRILLIANT Measurements 6.33 - 6.35 X 3.95 MM

GRADING RESULTS

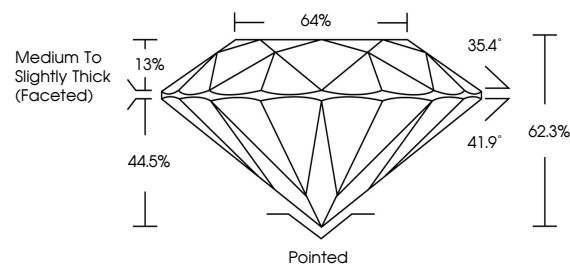
Carat Weight 1.00 CARAT Color Grade D Clarity Grade VVS 2 Cut Grade VERY GOOD

ADDITIONAL GRADING INFORMATION

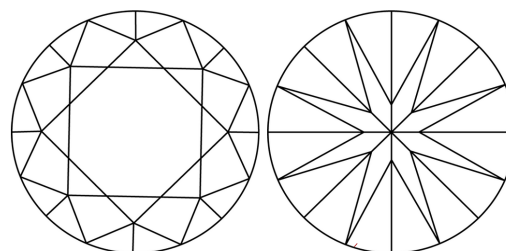
Polish EXCELLENT Symmetry EXCELLENT Fluorescence NONE Inscription(s) (IGI) LG779603543

Comments: This Laboratory Grown Diamond was created by Chemical Vapor Deposition (CVD) growth process. Type IIa

PROPORTIONS

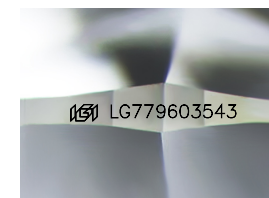


CLARITY CHARACTERISTICS



KEY TO SYMBOLS

Red symbols indicate internal characteristics. Green symbols indicate external characteristics.



Sample Image Used

COLOR

D E F G H I J Faint Very Light Light

CLARITY

FL IF VVS 1-2 VS 1-2 SI 1-2 I 1-3 Flawless Internally Flawless Very Very Slightly Included Very Slightly Included Slightly Included Included

