



ELECTRONIC COPY

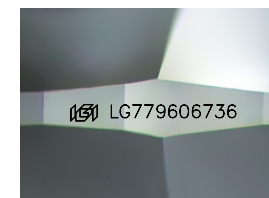
LG779606736
Report verification at igi.org



March 6, 2026
IGI Report Number LG779606736
Description LABORATORY GROWN DIAMOND
Shape and Cutting Style ROUND BRILLIANT
Measurements 7.93 - 7.98 X 4.93 MM

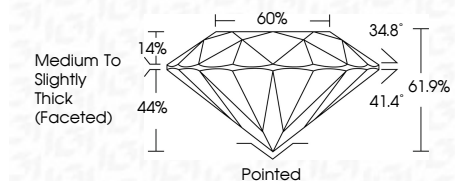
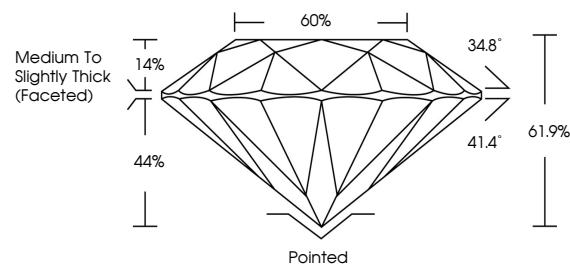
GRADING RESULTS

Carat Weight 1.94 CARAT
Color Grade E
Clarity Grade VS 2
Cut Grade IDEAL

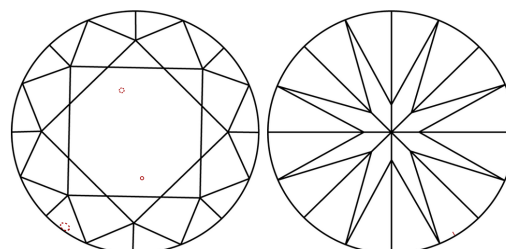


Sample Image Used

PROPORTIONS



CLARITY CHARACTERISTICS



KEY TO SYMBOLS

Red symbols indicate internal characteristics.
Green symbols indicate external characteristics.

COLOR

D E F G H I J Faint Very Light Light

CLARITY

FL IF VS 1-2 VS 1-2 SI 1-2 I 1-3
Flawless Internally Flawless Very Very Slightly Included Very Slightly Included Slightly Included Included

ADDITIONAL GRADING INFORMATION

Polish EXCELLENT
Symmetry EXCELLENT
Fluorescence NONE
Inscription(s) IGI LG779606736
Comments: This Laboratory Grown Diamond was created by Chemical Vapor Deposition (CVD) growth process. Type IIa



March 6, 2026
IGI Report No LG779606736
ROUND BRILLIANT
7.93 - 7.98 X 4.93 MM
1.94 CARAT E
VS 2 IDEAL
61.9% 60%
Medium To Slightly Thick (Faceted)
Pointed EXCELLENT EXCELLENT NONE
None IGI LG779606736
Comments: This Laboratory Grown Diamond was created by Chemical Vapor Deposition (CVD) growth process. Type IIa