



**ELECTRONIC COPY**

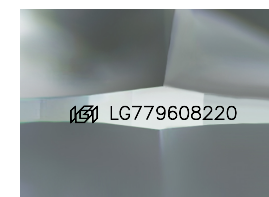
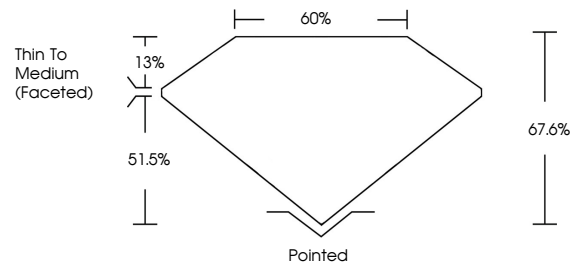
LG779608220  
Report verification at igi.org



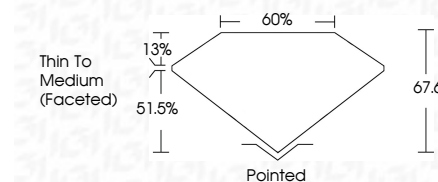
March 7, 2026  
IGI Report Number **LG779608220**  
Description **LABORATORY GROWN DIAMOND**  
Shape and Cutting Style **CUSHION MODIFIED BRILLIANT**  
Measurements **8.40 X 5.59 X 3.78 MM**  
**GRADING RESULTS**  
Carat Weight **1.43 CARAT**  
Color Grade **E**  
Clarity Grade **VVS 2**

March 7, 2026  
IGI Report Number **LG779608220**  
Description **LABORATORY GROWN DIAMOND**  
Shape and Cutting Style **CUSHION MODIFIED BRILLIANT**  
Measurements **8.40 X 5.59 X 3.78 MM**  
**GRADING RESULTS**  
Carat Weight **1.43 CARAT**  
Color Grade **E**  
Clarity Grade **VVS 2**

**PROPORTIONS**



Sample Image Used



**ADDITIONAL GRADING INFORMATION**

Polish **EXCELLENT**  
Symmetry **VERY GOOD**  
Fluorescence **NONE**  
Inscription(s) **IGI LG779608220**

Comments: As Grown - No indication of post-growth treatment.  
This Laboratory Grown Diamond was created by High Pressure High Temperature (HPHT) growth process. Type II

**ADDITIONAL GRADING INFORMATION**

Polish **EXCELLENT**  
Symmetry **VERY GOOD**  
Fluorescence **NONE**  
Inscription(s) **IGI LG779608220**  
Comments: As Grown - No indication of post-growth treatment.  
This Laboratory Grown Diamond was created by High Pressure High Temperature (HPHT) growth process. Type II

**COLOR**

D E F G H I J Faint Very Light Light

**CLARITY**

FL	IF	VVS <sup>1-2</sup>	VS <sup>1-2</sup>	SI <sup>1-2</sup>	I <sup>1-3</sup>
Flawless	Internally Flawless	Very Very Slightly Included	Very Slightly Included	Slightly Included	Included



**IGI**



March 7, 2026  
IGI Report No **LG779608220**  
**CUSHION MODIFIED BRILLIANT**  
8.40 X 5.59 X 3.78 MM  
1.43 CARAT  
E  
VVS 2  
67.6%  
60%  
Thin To Medium (Faceted)  
Pointed  
EXCELLENT  
VERY GOOD  
NONE  
IGI LG779608220

Comments: As Grown - No indication of post-growth treatment.  
This Laboratory Grown Diamond was created by High Pressure High Temperature (HPHT) growth process. Type II