



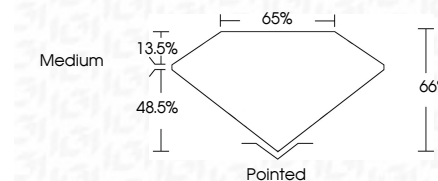
**ELECTRONIC COPY**

LG779612723  
Report verification at igi.org



March 11, 2026  
IGI Report Number **LG779612723**  
Description **LABORATORY GROWN DIAMOND**  
Shape and Cutting Style **SQUARE MIXED CUT**  
Measurements **7.85 X 7.82 X 5.16 MM**

**GRADING RESULTS**  
Carat Weight **3.15 CARATS**  
Color Grade **E**  
Clarity Grade **VVS 2**



**ADDITIONAL GRADING INFORMATION**  
Polish **EXCELLENT**  
Symmetry **EXCELLENT**  
Fluorescence **NONE**  
Inscription(s) **IGI LG779612723**  
Comments: This Laboratory Grown Diamond was created by Chemical Vapor Deposition (CVD) growth process. Type IIa



March 11, 2026  
IGI Report No LG779612723  
**SQUARE MIXED CUT**  
7.85 X 7.82 X 5.16 MM  
3.15 CARATS  
E  
VVS 2  
66%  
65%  
Medium  
Pointed  
EXCELLENT  
EXCELLENT  
NONE  
IGI LG779612723  
Comments: This Laboratory Grown Diamond was created by Chemical Vapor Deposition (CVD) growth process. Type IIa

**LABORATORY GROWN DIAMOND REPORT**

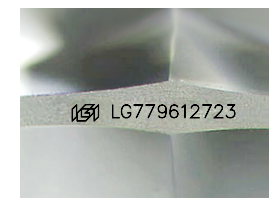
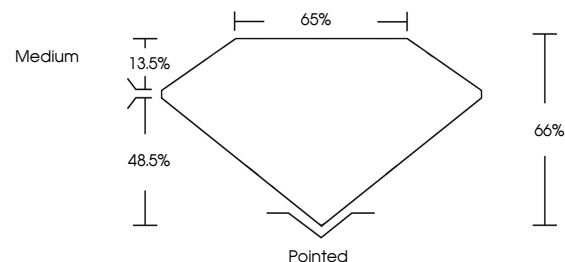
March 11, 2026  
IGI Report Number **LG779612723**  
Description **LABORATORY GROWN DIAMOND**  
Shape and Cutting Style **SQUARE MIXED CUT**  
Measurements **7.85 X 7.82 X 5.16 MM**

**GRADING RESULTS**  
Carat Weight **3.15 CARATS**  
Color Grade **E**  
Clarity Grade **VVS 2**

**ADDITIONAL GRADING INFORMATION**  
Polish **EXCELLENT**  
Symmetry **EXCELLENT**  
Fluorescence **NONE**  
Inscription(s) **IGI LG779612723**

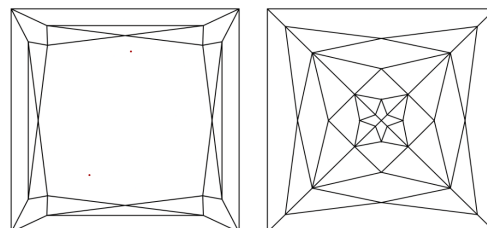
Comments: This Laboratory Grown Diamond was created by Chemical Vapor Deposition (CVD) growth process. Type IIa

**PROPORTIONS**



Sample Image Used

**CLARITY CHARACTERISTICS**



**KEY TO SYMBOLS**

Red symbols indicate internal characteristics.  
Green symbols indicate external characteristics.

**COLOR**

D E F G H I J Faint Very Light Light

**CLARITY**

FL	IF	VVS <sup>1-2</sup>	VS <sup>1-2</sup>	SI <sup>1-2</sup>	I <sup>1-3</sup>
Flawless	Internally Flawless	Very Very Slightly Included	Very Slightly Included	Slightly Included	Included

