



**ELECTRONIC COPY**

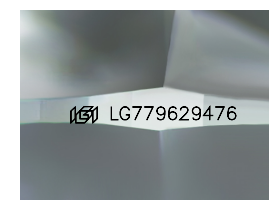
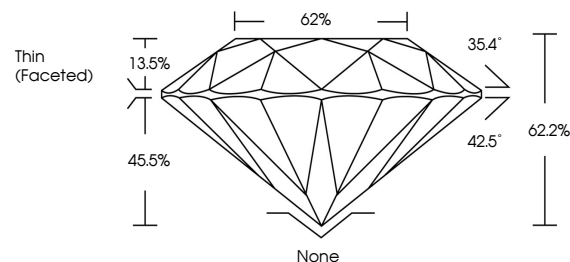
LG779629476  
Report verification at igi.org



March 11, 2026  
IGI Report Number **LG779629476**  
Description **LABORATORY GROWN DIAMOND**  
Shape and Cutting Style **ROUND BRILLIANT**  
Measurements **8.21 - 8.27 X 5.13 MM**  
**GRADING RESULTS**  
Carat Weight **2.12 CARATS**  
Color Grade **FANCY VIVID PINK**  
Clarity Grade **SI 1**  
Cut Grade **VERY GOOD**

March 11, 2026  
IGI Report Number **LG779629476**  
Description **LABORATORY GROWN DIAMOND**  
Shape and Cutting Style **ROUND BRILLIANT**  
Measurements **8.21 - 8.27 X 5.13 MM**

**PROPORTIONS**

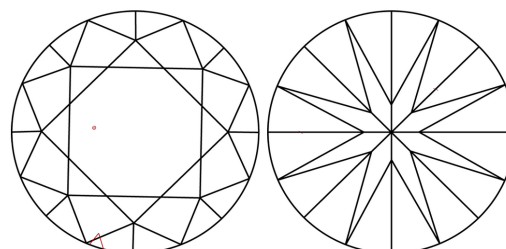


Sample Image Used

**GRADING RESULTS**

Carat Weight **2.12 CARATS**  
Color Grade **FANCY VIVID PINK**  
Clarity Grade **SI 1**  
Cut Grade **VERY GOOD**

**CLARITY CHARACTERISTICS**



**KEY TO SYMBOLS**

Red symbols indicate internal characteristics.  
Green symbols indicate external characteristics.

**ADDITIONAL GRADING INFORMATION**

Polish **VERY GOOD**  
Symmetry **VERY GOOD**  
Fluorescence **SLIGHT**  
Inscription(s) **IGI LG779629476**

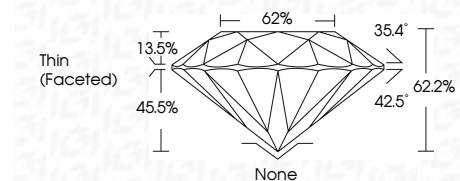
Comments: This Laboratory Grown Diamond was created by Chemical Vapor Deposition (CVD) growth process.  
Indications of post-growth treatment.

**COLOR**

D E F G H I J Faint Very Light Light

**CLARITY**

FL	IF	VS <sup>1-2</sup>	VS <sup>1-2</sup>	SI <sup>1-2</sup>	I <sup>1-3</sup>
Flawless	Internally Flawless	Very Very Slightly Included	Very Slightly Included	Slightly Included	Included



**ADDITIONAL GRADING INFORMATION**

Polish **VERY GOOD**  
Symmetry **VERY GOOD**  
Fluorescence **SLIGHT**  
Inscription(s) **IGI LG779629476**  
Comments: This Laboratory Grown Diamond was created by Chemical Vapor Deposition (CVD) growth process.  
Indications of post-growth treatment.



**IGI**



March 11, 2026  
IGI Report No LG779629476  
**ROUND BRILLIANT**  
8.21 - 8.27 X 5.13 MM  
2.12 CARATS  
FANCY VIVID PINK  
SI 1  
VERY GOOD  
62.2%  
62%  
Thin (Faceted)  
None  
VERY GOOD  
VERY GOOD  
SLIGHT  
IGI LG779629476  
Comments: This Laboratory Grown Diamond was created by Chemical Vapor Deposition (CVD) growth process.  
Indications of post-growth treatment.