



**ELECTRONIC COPY**

LG779630400  
Report verification at igi.org



March 20, 2026  
IGI Report Number **LG779630400**  
Description **LABORATORY GROWN DIAMOND**  
Shape and Cutting Style **CUT CORNERED  
RECTANGULAR MODIFIED  
BRILLIANT**  
Measurements **13.31 X 9.25 X 6.05 MM**  
**GRADING RESULTS**  
Carat Weight **7.23 CARATS**  
Color Grade **FANCY INTENSE YELLOW**  
Clarity Grade **VS 2**

March 20, 2026  
IGI Report Number **LG779630400**  
Description **LABORATORY GROWN DIAMOND**  
Shape and Cutting Style **CUT CORNERED RECTANGULAR  
MODIFIED BRILLIANT**  
Measurements **13.31 X 9.25 X 6.05 MM**

**GRADING RESULTS**

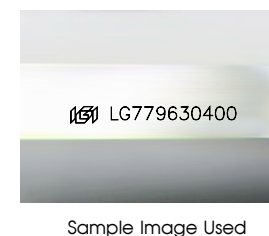
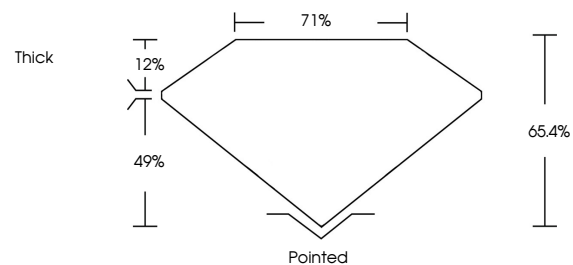
Carat Weight **7.23 CARATS**  
Color Grade **FANCY INTENSE YELLOW**  
Clarity Grade **VS 2**

**ADDITIONAL GRADING INFORMATION**

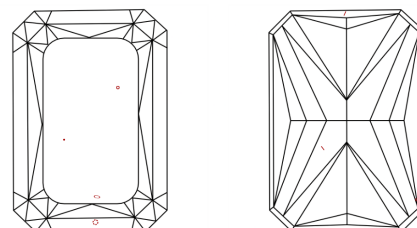
Polish **EXCELLENT**  
Symmetry **EXCELLENT**  
Fluorescence **NONE**  
Inscription(s) **IGI LG779630400**

Comments: This Laboratory Grown Diamond was created by Chemical Vapor Deposition (CVD) growth process.

**PROPORTIONS**



**CLARITY CHARACTERISTICS**



**KEY TO SYMBOLS**

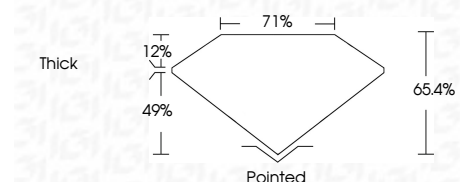
Red symbols indicate internal characteristics.  
Green symbols indicate external characteristics.

**COLOR**

D E F G H I J Faint Very Light Light

**CLARITY**

FL	IF	VS <sup>1-2</sup>	VS <sup>1-2</sup>	SI <sup>1-2</sup>	I <sup>1-3</sup>
Flawless	Internally Flawless	Very Very Slightly Included	Very Slightly Included	Slightly Included	Included



**ADDITIONAL GRADING INFORMATION**

Polish **EXCELLENT**  
Symmetry **EXCELLENT**  
Fluorescence **NONE**  
Inscription(s) **IGI LG779630400**  
Comments: This Laboratory Grown Diamond was created by Chemical Vapor Deposition (CVD) growth process.



March 20, 2026  
IGI Report No LG779630400  
CUT CORNERED RECT. MODIFIED BRILLIANT  
13.31 X 9.25 X 6.05 MM  
7.23 CARATS  
FANCY INTENSE YELLOW  
VS 2  
65.4%  
71%  
Thick  
Pointed  
EXCELLENT  
EXCELLENT  
NONE  
IGI LG779630400  
Comments: This Laboratory Grown Diamond was created by Chemical Vapor Deposition (CVD) growth process.