



ELECTRONIC COPY

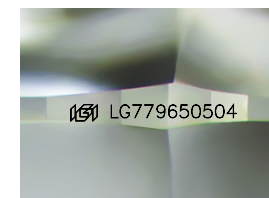
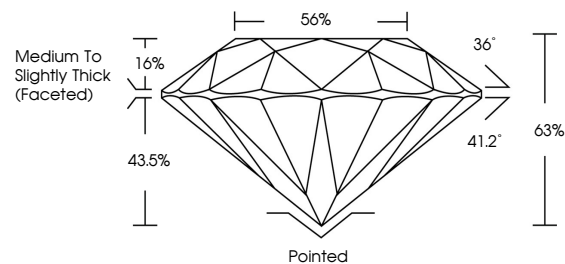
LG779650504
Report verification at igi.org



March 9, 2026
IGI Report Number LG779650504
Description LABORATORY GROWN DIAMOND
Shape and Cutting Style ROUND BRILLIANT
Measurements 7.36 - 7.42 X 4.65 MM
GRADING RESULTS
Carat Weight 1.55 CARAT
Color Grade E
Clarity Grade VS 1
Cut Grade EXCELLENT

March 9, 2026
IGI Report Number LG779650504
Description LABORATORY GROWN DIAMOND
Shape and Cutting Style ROUND BRILLIANT
Measurements 7.36 - 7.42 X 4.65 MM

PROPORTIONS

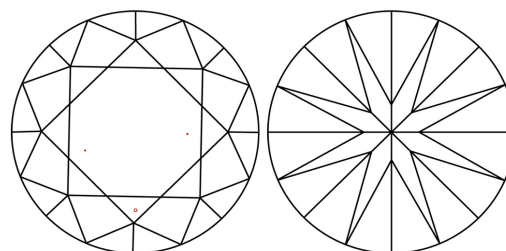


Sample Image Used

GRADING RESULTS

Carat Weight 1.55 CARAT
Color Grade E
Clarity Grade VS 1
Cut Grade EXCELLENT

CLARITY CHARACTERISTICS



KEY TO SYMBOLS

Red symbols indicate internal characteristics.
Green symbols indicate external characteristics.

ADDITIONAL GRADING INFORMATION

Polish EXCELLENT
Symmetry EXCELLENT
Fluorescence NONE
Inscription(s) IGI LG779650504

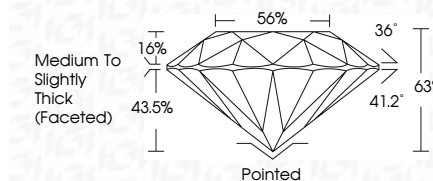
Comments: This Laboratory Grown Diamond was created by Chemical Vapor Deposition (CVD) growth process. Type IIa

COLOR

D E F G H I J Faint Very Light Light

CLARITY

FL IF VS 1-2 VS 2-3 SI 1-2 I 1-3
Flawless Internally Flawless Very Very Slightly Included Very Slightly Included Slightly Included Included



ADDITIONAL GRADING INFORMATION

Polish EXCELLENT
Symmetry EXCELLENT
Fluorescence NONE
Inscription(s) IGI LG779650504
Comments: This Laboratory Grown Diamond was created by Chemical Vapor Deposition (CVD) growth process. Type IIa



IGI



March 9, 2026
IGI Report No LG779650504
ROUND BRILLIANT
7.36 - 7.42 X 4.65 MM
1.55 CARAT
E
Color Grade EXCELLENT
Clarity Grade VS 1
Depth 65%
Table 86%
Girdle Medium To Slightly Thick (Faceted)
Culet Pointed
Polish EXCELLENT
Symmetry EXCELLENT
Fluorescence NONE
Inscription(s) IGI LG779650504
Comments: This Laboratory Grown Diamond was created by Chemical Vapor Deposition (CVD) growth process. Type IIa