



**ELECTRONIC COPY**

LG779654717  
Report verification at [igi.org](http://igi.org)



March 6, 2026

IGI Report Number **LG779654717**

Description **LABORATORY GROWN DIAMOND**

Shape and Cutting Style **ROUND BRILLIANT**

Measurements **6.98 - 7.02 X 4.30 MM**

**GRADING RESULTS**

Carat Weight **1.28 CARAT**

Color Grade **D**

Clarity Grade **VVS 2**

Cut Grade **IDEAL**

March 6, 2026

IGI Report Number **LG779654717**

Description **LABORATORY GROWN DIAMOND**

Shape and Cutting Style **ROUND BRILLIANT**

Measurements **6.98 - 7.02 X 4.30 MM**

**GRADING RESULTS**

Carat Weight **1.28 CARAT**

Color Grade **D**

Clarity Grade **VVS 2**

Cut Grade **IDEAL**

**ADDITIONAL GRADING INFORMATION**

Polish **EXCELLENT**

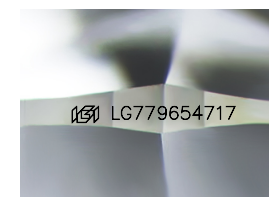
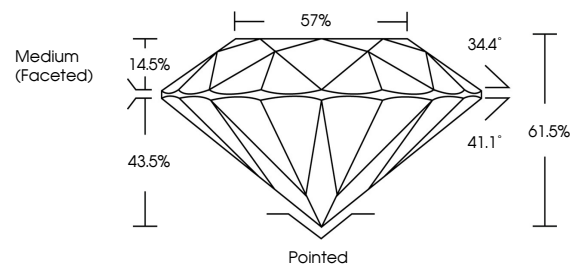
Symmetry **EXCELLENT**

Fluorescence **NONE**

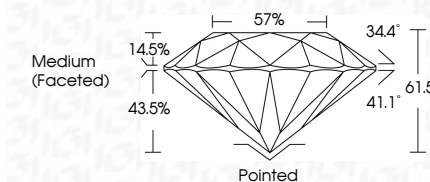
Inscription(s) **LG779654717**

Comments: This Laboratory Grown Diamond was created by Chemical Vapor Deposition (CVD) growth process. Type IIa

**PROPORTIONS**



Sample Image Used



**COLOR**

D E F G H I J Faint Very Light Light

**CLARITY**

| FL       | IF                  | VS <sup>1-2</sup>           | VS <sup>1-2</sup>      | SI <sup>1-2</sup> | I <sup>1-3</sup> |
|----------|---------------------|-----------------------------|------------------------|-------------------|------------------|
| Flawless | Internally Flawless | Very Very Slightly Included | Very Slightly Included | Slightly Included | Included         |

**ADDITIONAL GRADING INFORMATION**

Polish **EXCELLENT**

Symmetry **EXCELLENT**

Fluorescence **NONE**

Inscription(s) **LG779654717**

Comments: This Laboratory Grown Diamond was created by Chemical Vapor Deposition (CVD) growth process. Type IIa



**IGI**



|                              |                                  |                        |                      |              |              |               |              |               |                         |                     |                       |                  |             |                    |   |
|------------------------------|----------------------------------|------------------------|----------------------|--------------|--------------|---------------|--------------|---------------|-------------------------|---------------------|-----------------------|------------------|-------------|--------------------|---|
| March 6, 2026                | IGI Report No <b>LG779654717</b> | <b>ROUND BRILLIANT</b> | <b>1.28 CARAT</b>    | <b>D</b>     | <b>VVS 2</b> | <b>IDEAL</b>  | <b>61.5%</b> | <b>57%</b>    | <b>Medium (Faceted)</b> | <b>Pointed</b>      | <b>EXCELLENT</b>      | <b>EXCELLENT</b> | <b>NONE</b> | <b>LG779654717</b> | Comments: This Laboratory Grown Diamond was created by Chemical Vapor Deposition (CVD) growth process. Type IIa |
| <b>6.98 - 7.02 X 4.30 MM</b> | <b>Carat Weight</b>              | <b>Color Grade</b>     | <b>Clarity Grade</b> | <b>Depth</b> | <b>Table</b> | <b>Girdle</b> | <b>Culet</b> | <b>Polish</b> | <b>Symmetry</b>         | <b>Fluorescence</b> | <b>Inscription(s)</b> |                  |             |                    |   |