



**LABORATORY GROWN DIAMOND REPORT**

March 4, 2026  
 IGI Report Number **LG779667123**  
 Description **LABORATORY GROWN DIAMOND**  
 Shape and Cutting Style **PRINCESS CUT**  
 Measurements **4.03 X 3.97 X 2.88 MM**

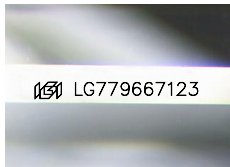
**GRADING RESULTS**

Carat Weight **0.42 CARAT**  
 Color Grade **E**  
 Clarity Grade **INTERNALLY FLAWLESS**

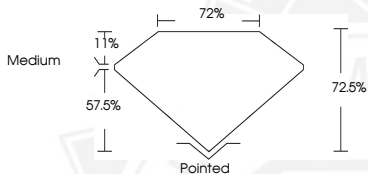
**ADDITIONAL GRADING INFORMATION**

Polish **EXCELLENT**  
 Symmetry **EXCELLENT**  
 Fluorescence **NONE**  
 Inscription(s) **IGI LG779667123**

Comments: This Laboratory Grown Diamond was created by  
 Chemical Vapor Deposition (CVD) growth process.  
 Type IIa



Sample Image Used



March 4, 2026  
 IGI Report Number **LG779667123**  
**PRINCESS CUT**  
**LABORATORY GROWN DIAMOND**  
**4.03 X 3.97 X 2.88 MM**  
 Carat Weight **0.42 CARAT**  
 Color Grade **E**  
 Clarity Grade **I.F.**  
 Polish **EXCELLENT**  
 Symmetry **EXCELLENT**  
 Fluorescence **NONE**  
 Inscription(s) **IGI LG779667123**

Comments: This Laboratory Grown  
 Diamond was created by  
 Chemical Vapor Deposition (CVD)  
 growth process. Type IIa



March 4, 2026  
 IGI Report Number **LG779667123**  
**PRINCESS CUT**  
**LABORATORY GROWN DIAMOND**  
**4.03 X 3.97 X 2.88 MM**  
 Carat Weight **0.42 CARAT**  
 Color Grade **E**  
 Clarity Grade **I.F.**  
 Polish **EXCELLENT**  
 Symmetry **EXCELLENT**  
 Fluorescence **NONE**  
 Inscription(s) **IGI LG779667123**

Comments: This Laboratory Grown  
 Diamond was created by  
 Chemical Vapor Deposition (CVD)  
 growth process. Type IIa



THIS DOCUMENT WAS PRODUCED WITH THE FOLLOWING SECURITY MEASURES: SPECIAL DOCUMENT PAPER, INK SCREENS, WATERMARK, BACKGROUND DESIGNS, HOLOGRAM AND OTHER SECURITY FEATURES NOT LISTED AND DO EXCEED DOCUMENT SECURITY INDUSTRY GUIDELINES.