



**INTERNATIONAL  
GEMOLOGICAL  
INSTITUTE**

**ELECTRONIC COPY**



March 3, 2026

**IGI Report Number LG780611899**  
**SQUARE CUSHION MODIFIED**  
**BRILLIANT**

**LABORATORY GROWN DIAMOND**  
**5.66 X 5.52 X 3.82 MM**

Carat Weight **0.89 CARAT**  
Color Grade **E**  
Clarity Grade **VS 2**  
Polish **EXCELLENT**  
Symmetry **EXCELLENT**  
Fluorescence **NONE**  
Inscription(s) **IGI LG780611899**

Comments: This Laboratory Grown Diamond was created by Chemical Vapor Deposition (CVD) growth process. Type IIa

**LABORATORY GROWN DIAMOND REPORT**

March 3, 2026

IGI Report Number

**LG780611899**

Description

**LABORATORY GROWN DIAMOND**

Shape and Cutting Style

**SQUARE CUSHION MODIFIED BRILLIANT**

Measurements

**5.66 X 5.52 X 3.82 MM**

**GRADING RESULTS**

Carat Weight

**0.89 CARAT**

Color Grade

**E**

Clarity Grade

**VS 2**

**ADDITIONAL GRADING INFORMATION**

Polish

**EXCELLENT**

Symmetry

**EXCELLENT**

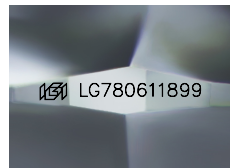
Fluorescence

**NONE**

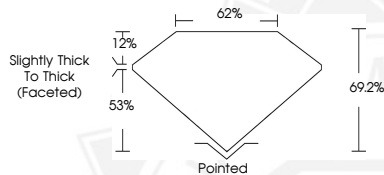
Inscription(s)

**IGI LG780611899**

Comments: This Laboratory Grown Diamond was created by Chemical Vapor Deposition (CVD) growth process. Type IIa



Sample Image Used



March 3, 2026

**IGI Report Number LG780611899**  
**SQUARE CUSHION MODIFIED**  
**BRILLIANT**

**LABORATORY GROWN DIAMOND**  
**5.66 X 5.52 X 3.82 MM**

Carat Weight **0.89 CARAT**  
Color Grade **E**  
Clarity Grade **VS 2**  
Polish **EXCELLENT**  
Symmetry **EXCELLENT**  
Fluorescence **NONE**  
Inscription(s) **IGI LG780611899**

Comments: This Laboratory Grown Diamond was created by Chemical Vapor Deposition (CVD) growth process. Type IIa



THIS DOCUMENT WAS PRODUCED WITH THE FOLLOWING SECURITY MEASURES: SPECIAL DOCUMENT PAPER, INK SCREENS, WATERMARK, BACKGROUND DESIGNS, HOLOGRAM AND OTHER SECURITY FEATURES NOT LISTED AND DO EXCEED DOCUMENT SECURITY INDUSTRY GUIDELINES.

For terms & conditions and to verify this report, please visit [www.igi.org](http://www.igi.org)