



ELECTRONIC COPY

LG780617585 Report verification at igi.org



March 10, 2026 IGI Report Number LG780617585 Description LABORATORY GROWN DIAMOND Shape and Cutting Style CUT CORNERED RECTANGULAR MODIFIED BRILLIANT Measurements 9.89 X 7.01 X 4.74 MM GRADING RESULTS Carat Weight 3.08 CARATS Color Grade E Clarity Grade VS 2

March 10, 2026 IGI Report Number LG780617585 Description LABORATORY GROWN DIAMOND Shape and Cutting Style CUT CORNERED RECTANGULAR MODIFIED BRILLIANT Measurements 9.89 X 7.01 X 4.74 MM

GRADING RESULTS

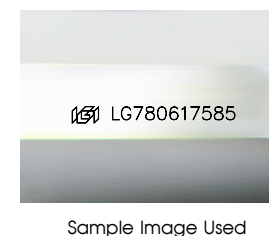
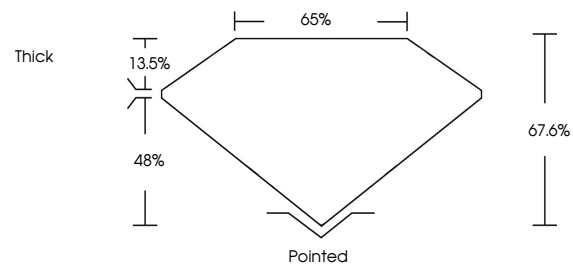
Carat Weight 3.08 CARATS Color Grade E Clarity Grade VS 2

ADDITIONAL GRADING INFORMATION

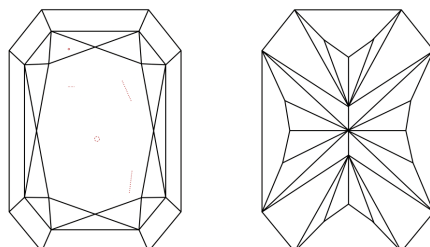
Polish EXCELLENT Symmetry EXCELLENT Fluorescence NONE Inscription(s) LG780617585

Comments: This Laboratory Grown Diamond was created by Chemical Vapor Deposition (CVD) growth process. Type IIa

PROPORTIONS



CLARITY CHARACTERISTICS



KEY TO SYMBOLS

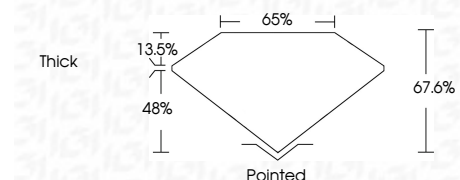
Red symbols indicate internal characteristics. Green symbols indicate external characteristics.

COLOR

D E F G H I J Faint Very Light Light

CLARITY

FL IF VS 1-2 VS 1-2 SI 1-2 I 1-3 Flawless Internally Flawless Very Very Slightly Included Very Slightly Included Slightly Included Included



ADDITIONAL GRADING INFORMATION

Polish EXCELLENT Symmetry EXCELLENT Fluorescence NONE Inscription(s) LG780617585 Comments: This Laboratory Grown Diamond was created by Chemical Vapor Deposition (CVD) growth process. Type IIa



March 10, 2026 IGI Report No LG780617585 CUT CORNERED RECT. MODIFIED BRILLIANT 9.89 X 7.01 X 4.74 MM 3.08 CARATS E VS 2 67.6% 65% Thick Pointed EXCELLENT EXCELLENT NONE NONE LG780617585 Comments: This Laboratory Grown Diamond was created by Chemical Vapor Deposition (CVD) growth process. Type IIa