



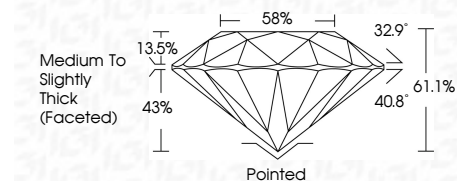
ELECTRONIC COPY

LG780619831 Report verification at igi.org



April 7, 2026 IGI Report Number LG780619831 Description LABORATORY GROWN DIAMOND Shape and Cutting Style ROUND BRILLIANT Measurements 8.06 - 8.12 X 4.95 MM

GRADING RESULTS Carat Weight 2.01 CARATS Color Grade D Clarity Grade VS 1 Cut Grade EXCELLENT

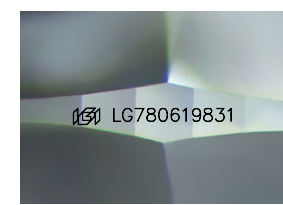
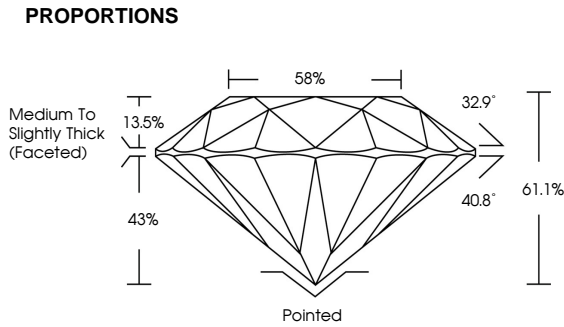


ADDITIONAL GRADING INFORMATION Polish EXCELLENT Symmetry EXCELLENT Fluorescence NONE Inscription(s) IGI LG780619831 Comments: As Grown - No indication of post-growth treatment. This Laboratory Grown Diamond was created by High Pressure High Temperature (HPHT) growth process. Type II



April 7, 2026 IGI Report No LG780619831 ROUND BRILLIANT 2.01 CARATS D EXCELLENT VS 1 EXCELLENT 8.06 - 8.12 X 4.95 MM 61.1% 58% Medium To Slightly Thick (Faceted) Pointed EXCELLENT EXCELLENT NONE NONE IGI LG780619831 Comments: As Grown - No indication of post-growth treatment. This Laboratory Grown Diamond was created by High Pressure High Temperature (HPHT) growth process. Type II

April 7, 2026 IGI Report Number LG780619831 Description LABORATORY GROWN DIAMOND Shape and Cutting Style ROUND BRILLIANT Measurements 8.06 - 8.12 X 4.95 MM GRADING RESULTS Carat Weight 2.01 CARATS Color Grade D Clarity Grade VS 1 Cut Grade EXCELLENT



Sample Image Used

Table with columns for Color grades: D, E, F, G, H, I, J, Faint, Very Light, Light

Table with columns for Clarity grades: FL, IF, VS 1-2, VS 1-2, SI 1-2, I 1-3

ADDITIONAL GRADING INFORMATION Polish EXCELLENT Symmetry EXCELLENT Fluorescence NONE Inscription(s) IGI LG780619831 Comments: As Grown - No indication of post-growth treatment. This Laboratory Grown Diamond was created by High Pressure High Temperature (HPHT) growth process. Type II

