



ELECTRONIC COPY

LG780623313
Report verification at igi.org



March 4, 2026
IGI Report Number **LG780623313**
Description **LABORATORY GROWN DIAMOND**
Shape and Cutting Style **CUT CORNERED
RECTANGULAR MODIFIED
BRILLIANT**
Measurements **10.68 X 7.73 X 5.13 MM**
GRADING RESULTS
Carat Weight **3.61 CARATS**
Color Grade **D**
Clarity Grade **VVS 2**

March 4, 2026
IGI Report Number **LG780623313**
Description **LABORATORY GROWN DIAMOND**
Shape and Cutting Style **CUT CORNERED RECTANGULAR
MODIFIED BRILLIANT**
Measurements **10.68 X 7.73 X 5.13 MM**

GRADING RESULTS

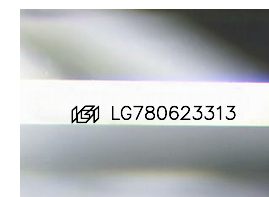
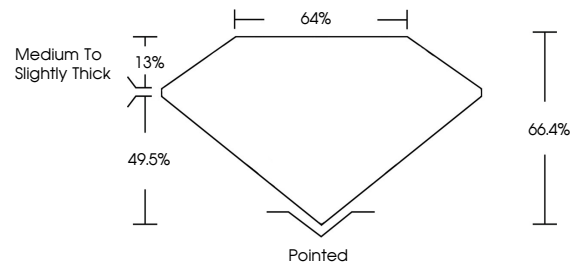
Carat Weight **3.61 CARATS**
Color Grade **D**
Clarity Grade **VVS 2**

ADDITIONAL GRADING INFORMATION

Polish **EXCELLENT**
Symmetry **EXCELLENT**
Fluorescence **NONE**
Inscription(s) **IGI LG780623313**

Comments: This Laboratory Grown Diamond was created by Chemical Vapor Deposition (CVD) growth process. Type IIa

PROPORTIONS



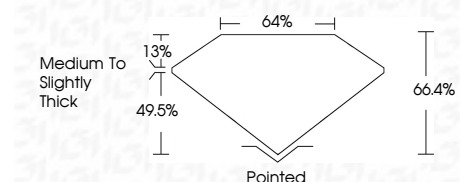
Sample Image Used

COLOR

D E F G H I J Faint Very Light Light

CLARITY

FL	IF	VVS ¹⁻²	VS ¹⁻²	SI ¹⁻²	I ¹⁻³
Flawless	Internally Flawless	Very Very Slightly Included	Very Slightly Included	Slightly Included	Included



ADDITIONAL GRADING INFORMATION

Polish **EXCELLENT**
Symmetry **EXCELLENT**
Fluorescence **NONE**
Inscription(s) **IGI LG780623313**
Comments: This Laboratory Grown Diamond was created by Chemical Vapor Deposition (CVD) growth process. Type IIa



March 4, 2026
IGI Report No **LG780623313**
CUT CORNERED RECT. MODIFIED BRILLIANT
10.68 X 7.73 X 5.13 MM
Carat Weight **3.61 CARATS**
Color Grade **D**
Clarity Grade **VVS 2**
Table **66.4%**
Girdle **49.5%**
Culet **Medium to Slightly Thick**
Polish **Pointed**
Symmetry **EXCELLENT**
Fluorescence **NONE**
Inscription(s) **IGI LG780623313**
Comments: This Laboratory Grown Diamond was created by Chemical Vapor Deposition (CVD) growth process. Type IIa