



ELECTRONIC COPY

LG780623482
Report verification at igi.org



March 5, 2026
IGI Report Number LG780623482
Description LABORATORY GROWN DIAMOND
Shape and Cutting Style ROUND BRILLIANT
Measurements 10.25 - 10.28 X 6.29 MM
GRADING RESULTS
Carat Weight 4.08 CARATS
Color Grade E
Clarity Grade VVS 2
Cut Grade IDEAL

March 5, 2026
IGI Report Number LG780623482
Description LABORATORY GROWN DIAMOND
Shape and Cutting Style ROUND BRILLIANT
Measurements 10.25 - 10.28 X 6.29 MM

GRADING RESULTS

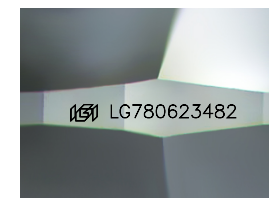
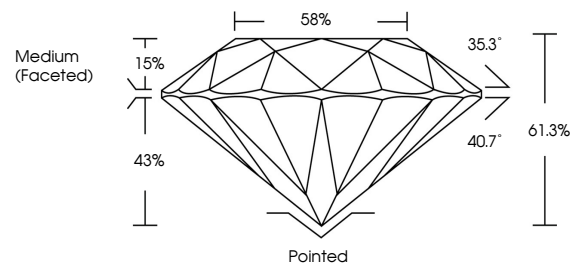
Carat Weight 4.08 CARATS
Color Grade E
Clarity Grade VVS 2
Cut Grade IDEAL

ADDITIONAL GRADING INFORMATION

Polish EXCELLENT
Symmetry EXCELLENT
Fluorescence NONE
Inscription(s) LG780623482

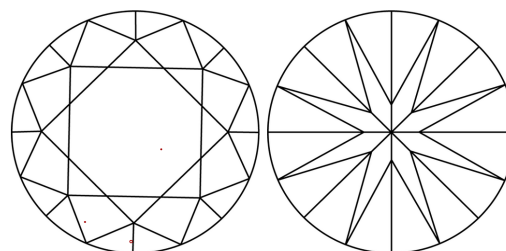
Comments: HEARTS & ARROWS
This Laboratory Grown Diamond was created by Chemical Vapor Deposition (CVD) growth process. Type IIa

PROPORTIONS



Sample Image Used

CLARITY CHARACTERISTICS



KEY TO SYMBOLS

Red symbols indicate internal characteristics.
Green symbols indicate external characteristics.

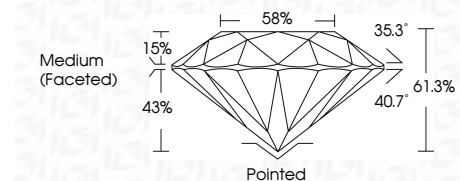


COLOR

D E F G H I J Faint Very Light Light

CLARITY

FL IF VVS 1-2 VS 1-2 SI 1-2 I 1-3
Flawless Internally Flawless Very Very Slightly Included Very Slightly Included Slightly Included Included



ADDITIONAL GRADING INFORMATION

Polish EXCELLENT
Symmetry EXCELLENT
Fluorescence NONE
Inscription(s) LG780623482
Comments: HEARTS & ARROWS
This Laboratory Grown Diamond was created by Chemical Vapor Deposition (CVD) growth process. Type IIa



Summary table with columns: IGI Report No, Round, Carat Weight, Color Grade, Clarity Grade, Depth, Table, Girdle, Cutler, Polish, Symmetry, Fluorescence, Inscription(s), and Comments.