



ELECTRONIC COPY

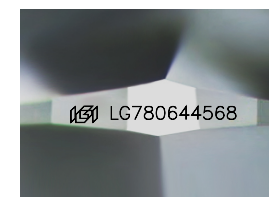
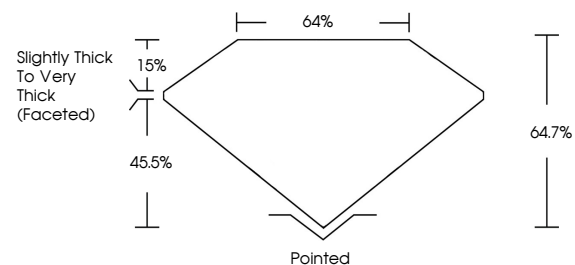
LG780644568
Report verification at igi.org



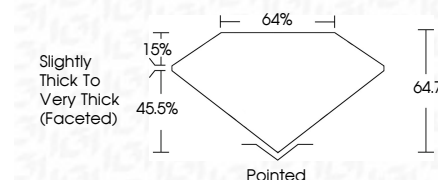
March 12, 2026
IGI Report Number **LG780644568**
Description **LABORATORY GROWN DIAMOND**
Shape and Cutting Style **SQUARE CUSHION MODIFIED BRILLIANT**
Measurements **6.53 X 6.35 X 4.11 MM**
GRADING RESULTS
Carat Weight **1.55 CARAT**
Color Grade **FANCY YELLOW**
Clarity Grade **VS 2**

March 12, 2026
IGI Report Number **LG780644568**
Description **LABORATORY GROWN DIAMOND**
Shape and Cutting Style **SQUARE CUSHION MODIFIED BRILLIANT**
Measurements **6.53 X 6.35 X 4.11 MM**
GRADING RESULTS
Carat Weight **1.55 CARAT**
Color Grade **FANCY YELLOW**
Clarity Grade **VS 2**

PROPORTIONS



Sample Image Used



ADDITIONAL GRADING INFORMATION

Polish **EXCELLENT**
Symmetry **EXCELLENT**
Fluorescence **NONE**
Inscription(s) **IGI LG780644568**

Comments: This Laboratory Grown Diamond was created by Chemical Vapor Deposition (CVD) growth process.

ADDITIONAL GRADING INFORMATION

Polish **EXCELLENT**
Symmetry **EXCELLENT**
Fluorescence **NONE**
Inscription(s) **IGI LG780644568**
Comments: This Laboratory Grown Diamond was created by Chemical Vapor Deposition (CVD) growth process.

COLOR

D E F G H I J Faint Very Light Light

CLARITY

| FL | IF | VS ¹⁻² | VS ¹⁻² | SI ¹⁻² | I ¹⁻³ |
|----------|---------------------|-----------------------------|------------------------|-------------------|------------------|
| Flawless | Internally Flawless | Very Very Slightly Included | Very Slightly Included | Slightly Included | Included |



IGI



March 12, 2026
IGI Report No **LG780644568**
SQUARE CUSHION MODIFIED BRILLIANT
6.53 X 6.35 X 4.11 MM
Carat Weight **1.55 CARAT**
Color Grade **FANCY YELLOW**
Clarity Grade **VS 2**
Table **64.7%**
Girdle **Slightly Thick To Very Thick (Faceted)**
Culet **Pointed**
Polish **EXCELLENT**
Symmetry **EXCELLENT**
Fluorescence **NONE**
Inscription(s) **IGI LG780644568**

Comments: This Laboratory Grown Diamond was created by Chemical Vapor Deposition (CVD) growth process.