



**ELECTRONIC COPY**

LG780662187  
Report verification at igi.org



March 30, 2026  
IGI Report Number **LG780662187**  
Description **LABORATORY GROWN DIAMOND**

Shape and Cutting Style **ANTIQUÉ CUSHION CUT**  
Measurements **11.06 X 8.64 X 5.74 MM**

**GRADING RESULTS**  
Carat Weight **4.30 CARATS**  
Color Grade **D**  
Clarity Grade **FLAWLESS**

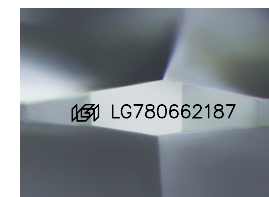
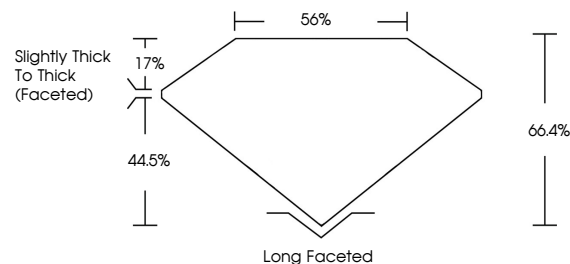
March 30, 2026  
IGI Report Number **LG780662187**  
Description **LABORATORY GROWN DIAMOND**  
Shape and Cutting Style **ANTIQUÉ CUSHION CUT**  
Measurements **11.06 X 8.64 X 5.74 MM**

**GRADING RESULTS**  
Carat Weight **4.30 CARATS**  
Color Grade **D**  
Clarity Grade **FLAWLESS**

**ADDITIONAL GRADING INFORMATION**  
Polish **EXCELLENT**  
Symmetry **EXCELLENT**  
Fluorescence **NONE**  
Inscription(s) **IGI LG780662187**

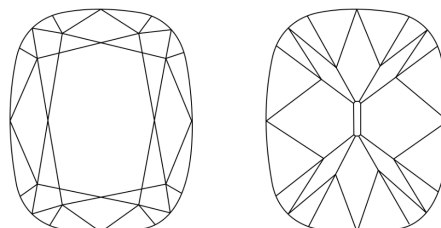
Comments: As Grown - No indication of post-growth treatment.  
This Laboratory Grown Diamond was created by High Pressure High Temperature (HPHT) growth process.  
Type II

**PROPORTIONS**



Sample Image Used

**CLARITY CHARACTERISTICS**



**KEY TO SYMBOLS**

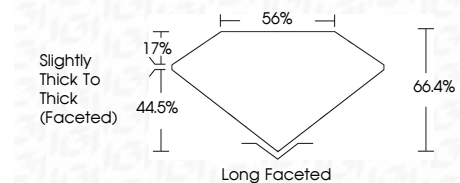
Red symbols indicate internal characteristics.  
Green symbols indicate external characteristics.

**COLOR**

D E F G H I J Faint Very Light Light

**CLARITY**

FL	IF	VS <sup>1-2</sup>	VS <sup>1-2</sup>	SI <sup>1-2</sup>	I <sup>1-3</sup>
Flawless	Internally Flawless	Very Very Slightly Included	Very Slightly Included	Slightly Included	Included



**ADDITIONAL GRADING INFORMATION**

Polish **EXCELLENT**  
Symmetry **EXCELLENT**  
Fluorescence **NONE**  
Inscription(s) **IGI LG780662187**  
Comments: As Grown - No indication of post-growth treatment.  
This Laboratory Grown Diamond was created by High Pressure High Temperature (HPHT) growth process.  
Type II



**IGI**



March 30, 2026  
IGI Report No. LG780662187  
**ANTIQUÉ CUSHION CUT**  
11.06 X 8.64 X 5.74 MM  
4.30 CARATS  
D  
FLAWLESS  
66.4%  
44.5%  
Slightly Thick To Thick (Faceted)  
Long Faceted  
EXCELLENT  
EXCELLENT  
NONE  
IGI LG780662187

Comments: As Grown - No indication of post-growth treatment.  
This Laboratory Grown Diamond was created by High Pressure High Temperature (HPHT) growth process.  
Type II