



**ELECTRONIC COPY**

LG780672315  
Report verification at igi.org



March 7, 2026

IGI Report Number **LG780672315**

Description **LABORATORY GROWN DIAMOND**

Shape and Cutting Style **ROUND BRILLIANT**

Measurements **6.46 - 6.50 X 4.02 MM**

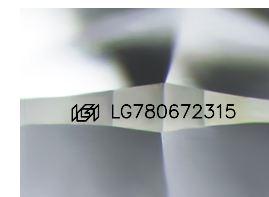
**GRADING RESULTS**

Carat Weight **1.04 CARAT**

Color Grade **F**

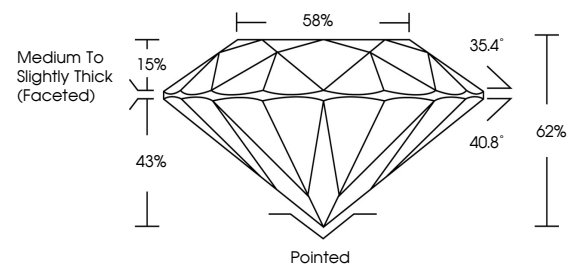
Clarity Grade **VVS 2**

Cut Grade **IDEAL**

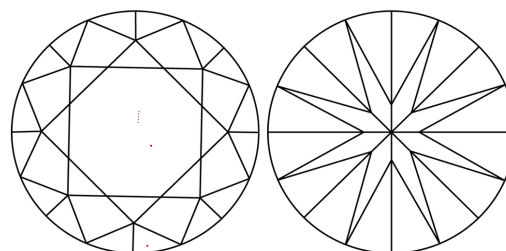


Sample Image Used

**PROPORTIONS**



**CLARITY CHARACTERISTICS**



**KEY TO SYMBOLS**

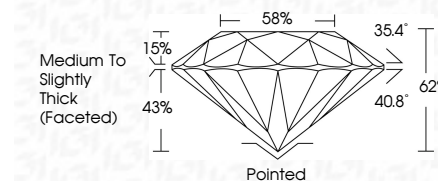
Red symbols indicate internal characteristics.  
Green symbols indicate external characteristics.

**COLOR**

D E F G H I J Faint Very Light Light

**CLARITY**

| FL       | IF                  | VVS <sup>1-2</sup>          | VS <sup>1-2</sup>      | SI <sup>1-2</sup> | I <sup>1-3</sup> |
|----------|---------------------|-----------------------------|------------------------|-------------------|------------------|
| Flawless | Internally Flawless | Very Very Slightly Included | Very Slightly Included | Slightly Included | Included         |



**ADDITIONAL GRADING INFORMATION**

Polish **EXCELLENT**

Symmetry **EXCELLENT**

Fluorescence **NONE**

Inscription(s) **IGI LG780672315**

Comments: This Laboratory Grown Diamond was created by Chemical Vapor Deposition (CVD) growth process. Type IIa



**IGI**



|                 |                           |             |               |           |       |       |        |                                    |         |           |           |      |                 |
|-----------------|---------------------------|-------------|---------------|-----------|-------|-------|--------|------------------------------------|---------|-----------|-----------|------|-----------------|
| March 7, 2026   | IGI Report No LG780672315 | 1.04 CARAT  | F             | VVS 2     | IDEAL | 62%   | 58%    | Medium To Slightly Thick (Faceted) | Pointed | EXCELLENT | EXCELLENT | NONE | IGI LG780672315 |
| ROUND BRILLIANT | 6.46 - 6.50 X 4.02 MM     | Color Grade | Clarity Grade | Cut Grade | Depth | Table | Girdle |                                    |         |           |           |      |                 |

Comments: This Laboratory Grown Diamond was created by Chemical Vapor Deposition (CVD) growth process. Type IIa