



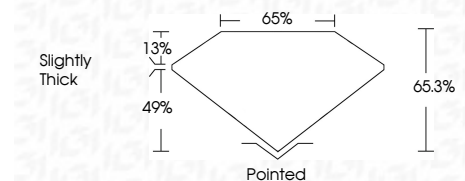
**ELECTRONIC COPY**

LG780676465  
Report verification at igi.org



March 12, 2026  
IGI Report Number **LG780676465**  
Description **LABORATORY GROWN DIAMOND**  
Shape and Cutting Style **SQUARE MIXED CUT**  
Measurements **8.96 X 8.90 X 5.81 MM**

**GRADING RESULTS**  
Carat Weight **4.47 CARATS**  
Color Grade **E**  
Clarity Grade **VS 1**



**ADDITIONAL GRADING INFORMATION**  
Polish **EXCELLENT**  
Symmetry **EXCELLENT**  
Fluorescence **NONE**  
Inscription(s) **IGI LG780676465**  
Comments: This Laboratory Grown Diamond was created by Chemical Vapor Deposition (CVD) growth process. Type IIa



March 12, 2026  
IGI Report No LG780676465  
**SQUARE MIXED CUT**  
8.96 X 8.90 X 5.81 MM  
4.47 CARATS  
E  
VS 1  
65.3%  
49%  
13%  
Slightly Thick  
Pointed  
EXCELLENT  
EXCELLENT  
NONE  
IGI LG780676465  
Comments: This Laboratory Grown Diamond was created by Chemical Vapor Deposition (CVD) growth process. Type IIa

**LABORATORY GROWN DIAMOND REPORT**

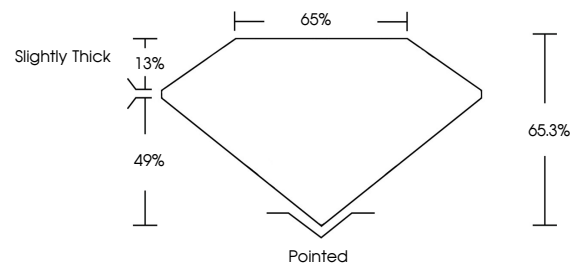
March 12, 2026  
IGI Report Number **LG780676465**  
Description **LABORATORY GROWN DIAMOND**  
Shape and Cutting Style **SQUARE MIXED CUT**  
Measurements **8.96 X 8.90 X 5.81 MM**

**GRADING RESULTS**  
Carat Weight **4.47 CARATS**  
Color Grade **E**  
Clarity Grade **VS 1**

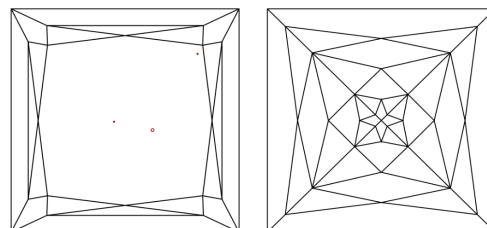
**ADDITIONAL GRADING INFORMATION**  
Polish **EXCELLENT**  
Symmetry **EXCELLENT**  
Fluorescence **NONE**  
Inscription(s) **IGI LG780676465**

Comments: This Laboratory Grown Diamond was created by Chemical Vapor Deposition (CVD) growth process. Type IIa

**PROPORTIONS**

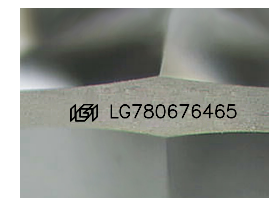


**CLARITY CHARACTERISTICS**



**KEY TO SYMBOLS**

Red symbols indicate internal characteristics.  
Green symbols indicate external characteristics.



Sample Image Used

**COLOR**

D E F G H I J Faint Very Light Light

**CLARITY**

FL	IF	VS <sup>1-2</sup>	VS <sup>1-2</sup>	SI <sup>1-2</sup>	I <sup>1-3</sup>
Flawless	Internally Flawless	Very Very Slightly Included	Very Slightly Included	Slightly Included	Included

