



ELECTRONIC COPY

LG780678844
Report verification at igi.org



May 20, 2026
IGI Report Number **LG780678844**
Description **LABORATORY GROWN DIAMOND**
Shape and Cutting Style **OVAL MODIFIED BRILLIANT**
Measurements **8.04 X 5.64 X 3.79 MM**
GRADING RESULTS
Carat Weight **1.36 CARAT**
Color Grade **FANCY INTENSE GREENISH YELLOW**
Clarity Grade **VVS 2**

May 20, 2026
IGI Report Number **LG780678844**
Description **LABORATORY GROWN DIAMOND**
Shape and Cutting Style **OVAL MODIFIED BRILLIANT**
Measurements **8.04 X 5.64 X 3.79 MM**

GRADING RESULTS

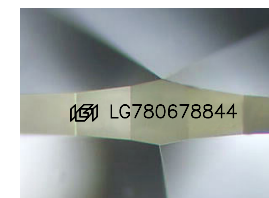
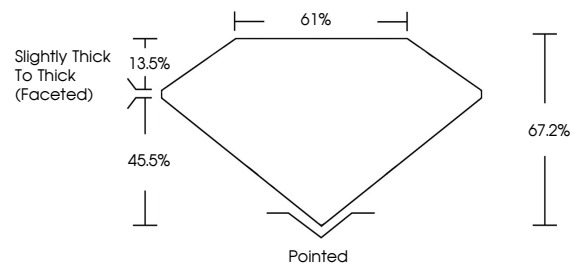
Carat Weight **1.36 CARAT**
Color Grade **FANCY INTENSE GREENISH YELLOW**
Clarity Grade **VVS 2**

ADDITIONAL GRADING INFORMATION

Polish **EXCELLENT**
Symmetry **VERY GOOD**
Fluorescence **NONE**
Inscription(s) **IGI LG780678844**

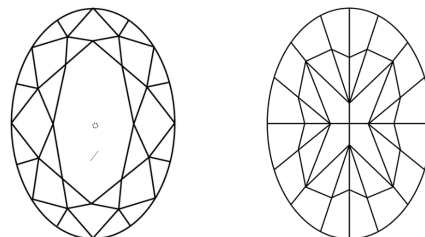
Comments: This Laboratory Grown Diamond was created by High Pressure High Temperature (HPHT) growth process. Indications of post-growth treatment.

PROPORTIONS



Sample Image Used

CLARITY CHARACTERISTICS



KEY TO SYMBOLS

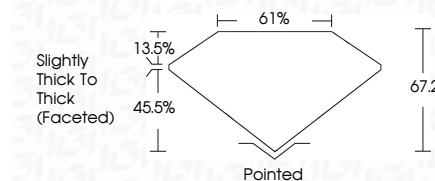
Red symbols indicate internal characteristics.
Green symbols indicate external characteristics.

COLOR

D E F G H I J Faint Very Light Light

CLARITY

FL	IF	VVS ¹⁻²	VS ¹⁻²	SI ¹⁻²	I ¹⁻³
Flawless	Internally Flawless	Very Very Slightly Included	Very Slightly Included	Slightly Included	Included



ADDITIONAL GRADING INFORMATION

Polish **EXCELLENT**
Symmetry **VERY GOOD**
Fluorescence **NONE**
Inscription(s) **IGI LG780678844**
Comments: This Laboratory Grown Diamond was created by High Pressure High Temperature (HPHT) growth process. Indications of post-growth treatment.



May 20, 2026
IGI Report No LG780678844
OVAL MODIFIED BRILLIANT
8.04 X 5.64 X 3.79 MM
1.36 CARAT
Carat Weight
Color Grade
FANCY INTENSE GREENISH YELLOW
VVS 2
Clarity Grade
Depth
8.04
Table
61%
67.2%
Slightly Thick To Thick (Faceted)
Pointed
Culet
EXCELLENT
Polish
VERY GOOD
Symmetry
NONE
Fluorescence
Inscription(s)
IGI LG780678844

Comments: This Laboratory Grown Diamond was created by High Pressure High Temperature (HPHT) growth process. Indications of post-growth treatment.