



ELECTRONIC COPY

LG780678864
Report verification at igi.org



May 20, 2026

IGI Report Number **LG780678864**

Description **LABORATORY GROWN DIAMOND**

Shape and Cutting Style **CUT CORNERED
RECTANGULAR MODIFIED
BRILLIANT**

Measurements **6.87 X 4.77 X 3.33 MM**

GRADING RESULTS

Carat Weight **1.03 CARAT**

Color Grade **FANCY INTENSE YELLOW**

Clarity Grade **VS 1**

LABORATORY GROWN DIAMOND REPORT

May 20, 2026

IGI Report Number **LG780678864**

Description **LABORATORY GROWN DIAMOND**

Shape and Cutting Style **CUT CORNERED RECTANGULAR
MODIFIED BRILLIANT**

Measurements **6.87 X 4.77 X 3.33 MM**

GRADING RESULTS

Carat Weight **1.03 CARAT**

Color Grade **FANCY INTENSE YELLOW**

Clarity Grade **VS 1**

ADDITIONAL GRADING INFORMATION

Polish **VERY GOOD**

Symmetry **VERY GOOD**

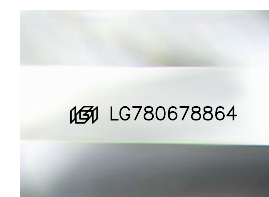
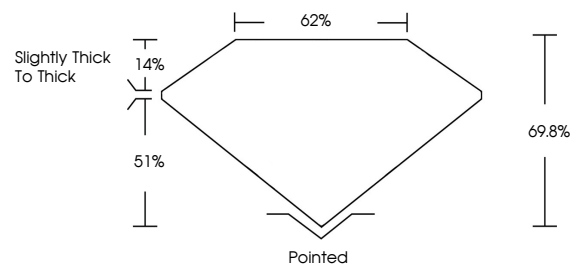
Fluorescence **NONE**

Inscription(s) **IGI LG780678864**

Comments: This Laboratory Grown Diamond was created by Chemical Vapor Deposition (CVD) growth process.

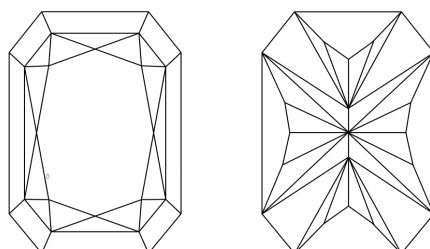
Indications of post-growth treatment.

PROPORTIONS



Sample Image Used

CLARITY CHARACTERISTICS



KEY TO SYMBOLS

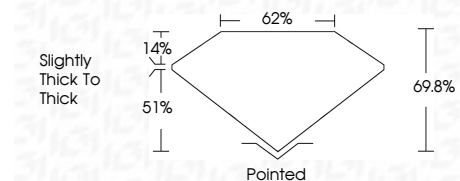
Red symbols indicate internal characteristics.
Green symbols indicate external characteristics.

COLOR

D E F G H I J Faint Very Light Light

CLARITY

FL	IF	VS ¹⁻²	VS ¹⁻²	SI ¹⁻²	I ¹⁻³
Flawless	Internally Flawless	Very Very Slightly Included	Very Slightly Included	Slightly Included	Included



ADDITIONAL GRADING INFORMATION

Polish **VERY GOOD**

Symmetry **VERY GOOD**

Fluorescence **NONE**

Inscription(s) **IGI LG780678864**

Comments: This Laboratory Grown Diamond was created by Chemical Vapor Deposition (CVD) growth process. Indications of post-growth treatment.



May 20, 2026
IGI Report No LG780678864
CUT CORNERED RECT. MODIFIED BRILLIANT
6.87 X 4.77 X 3.33 MM
Carat Weight 1.03 CARAT
Color Grade FANCY INTENSE YELLOW
Clarity Grade VS 1
Table 62%
Girdle Slightly thick to thick
Culet Pointed
Polish VERY GOOD
Symmetry VERY GOOD
Fluorescence NONE
Inscription(s) IGI LG780678864
Comments: This Laboratory Grown Diamond was created by Chemical Vapor Deposition (CVD) growth process. Indications of post-growth treatment.