



**ELECTRONIC COPY**

LG780678885  
Report verification at igi.org



May 20, 2026  
IGI Report Number **LG780678885**  
Description **LABORATORY GROWN DIAMOND**  
Shape and Cutting Style **CUSHION MODIFIED BRILLIANT**  
Measurements **7.08 X 6.71 X 4.44 MM**  
**GRADING RESULTS**  
Carat Weight **1.91 CARAT**  
Color Grade **FANCY INTENSE BLUE**  
Clarity Grade **VVS 2**

May 20, 2026  
IGI Report Number **LG780678885**  
Description **LABORATORY GROWN DIAMOND**  
Shape and Cutting Style **CUSHION MODIFIED BRILLIANT**  
Measurements **7.08 X 6.71 X 4.44 MM**

**GRADING RESULTS**

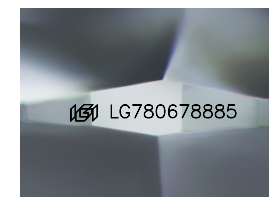
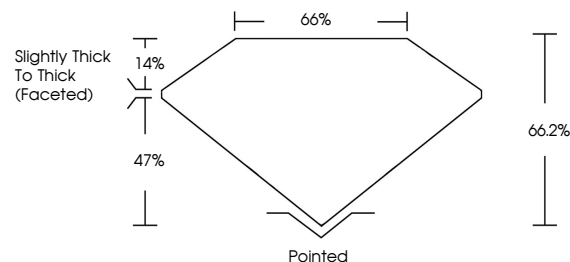
Carat Weight **1.91 CARAT**  
Color Grade **FANCY INTENSE BLUE**  
Clarity Grade **VVS 2**

**ADDITIONAL GRADING INFORMATION**

Polish **EXCELLENT**  
Symmetry **VERY GOOD**  
Fluorescence **NONE**  
Inscription(s) **IGI LG780678885**

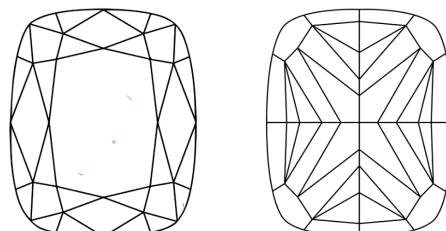
Comments: This Laboratory Grown Diamond was created by High Pressure High Temperature (HPHT) growth process.  
Indications of post-growth treatment.

**PROPORTIONS**



Sample Image Used

**CLARITY CHARACTERISTICS**



**KEY TO SYMBOLS**

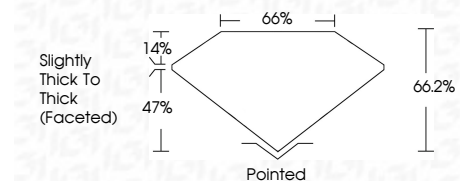
Red symbols indicate internal characteristics.  
Green symbols indicate external characteristics.

**COLOR**

D E F G H I J Faint Very Light Light

**CLARITY**

FL	IF	VVS <sup>1-2</sup>	VS <sup>1-2</sup>	SI <sup>1-2</sup>	I <sup>1-3</sup>
Flawless	Internally Flawless	Very Very Slightly Included	Very Slightly Included	Slightly Included	Included



**ADDITIONAL GRADING INFORMATION**

Polish **EXCELLENT**  
Symmetry **VERY GOOD**  
Fluorescence **NONE**  
Inscription(s) **IGI LG780678885**  
Comments: This Laboratory Grown Diamond was created by High Pressure High Temperature (HPHT) growth process.  
Indications of post-growth treatment.



**IGI**



May 20, 2026  
IGI Report No LG780678885  
**CUSHION MODIFIED BRILLIANT**  
1.91 CARAT  
FANCY INTENSE BLUE  
VVS 2  
66.2%  
65%  
Slightly Thick To Thick (Faceted)  
Pointed  
EXCELLENT  
VERY GOOD  
NONE  
IGI LG780678885

Comments: This Laboratory Grown Diamond was created by High Pressure High Temperature (HPHT) growth process.  
Indications of post-growth treatment.