



**ELECTRONIC COPY**

LG780679230  
Report verification at [igi.org](http://igi.org)



April 30, 2026

IGI Report Number **LG780679230**

Description **LABORATORY GROWN DIAMOND**

Shape and Cutting Style **EMERALD CUT**

Measurements **9.04 X 6.34 X 4.41 MM**

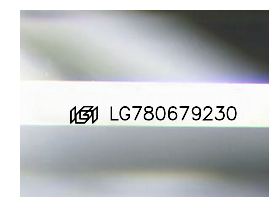
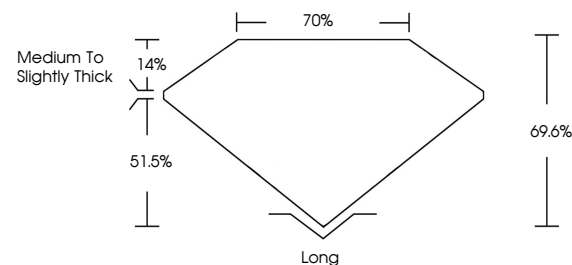
**GRADING RESULTS**

Carat Weight **2.51 CARATS**

Color Grade **E**

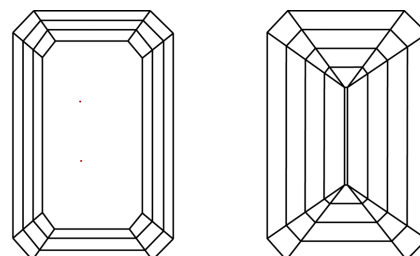
Clarity Grade **VVS 2**

**PROPORTIONS**



Sample Image Used

**CLARITY CHARACTERISTICS**



**KEY TO SYMBOLS**

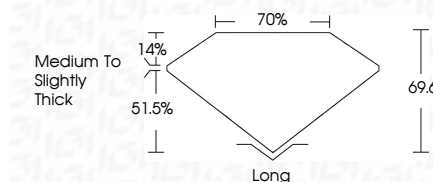
Red symbols indicate internal characteristics.  
Green symbols indicate external characteristics.

**COLOR**

D E F G H I J Faint Very Light Light

**CLARITY**

FL	IF	VS <sup>1-2</sup>	VS <sup>1-2</sup>	SI <sup>1-2</sup>	I <sup>1-3</sup>
Flawless	Internally Flawless	Very Very Slightly Included	Very Slightly Included	Slightly Included	Included



**ADDITIONAL GRADING INFORMATION**

Polish **EXCELLENT**

Symmetry **EXCELLENT**

Fluorescence **NONE**

Inscription(s) **IGI LG780679230**

Comments: This Laboratory Grown Diamond was created by Chemical Vapor Deposition (CVD) growth process. Type IIa



**IGI**



April 30, 2026  
IGI Report No. LG780679230  
**EMERALD CUT**

**9.04 X 6.34 X 4.41 MM**

Carat Weight **2.51 CARATS**

Color Grade **E**

Clarity Grade **VVS 2**

Depth **69.6%**

Table **70%**

Girdle **Medium to Slightly Thick**

Culet **Long**

Polish **EXCELLENT**

Symmetry **EXCELLENT**

Fluorescence **NONE**

Inscription(s) **IGI LG780679230**

Comments: This Laboratory Grown Diamond was created by Chemical Vapor Deposition (CVD) growth process. Type IIa