



**ELECTRONIC COPY**

LG780686451  
Report verification at igi.org



March 6, 2026

IGI Report Number **LG780686451**

Description **LABORATORY GROWN DIAMOND**

Shape and Cutting Style **ROUND BRILLIANT**

Measurements **8.11 - 8.20 X 4.98 MM**

**GRADING RESULTS**

Carat Weight **2.02 CARATS**

Color Grade **E**

Clarity Grade **VS 1**

Cut Grade **IDEAL**

March 6, 2026

IGI Report Number **LG780686451**

Description **LABORATORY GROWN DIAMOND**

Shape and Cutting Style **ROUND BRILLIANT**

Measurements **8.11 - 8.20 X 4.98 MM**

**GRADING RESULTS**

Carat Weight **2.02 CARATS**

Color Grade **E**

Clarity Grade **VS 1**

Cut Grade **IDEAL**

**ADDITIONAL GRADING INFORMATION**

Polish **EXCELLENT**

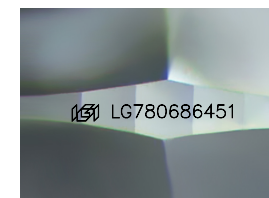
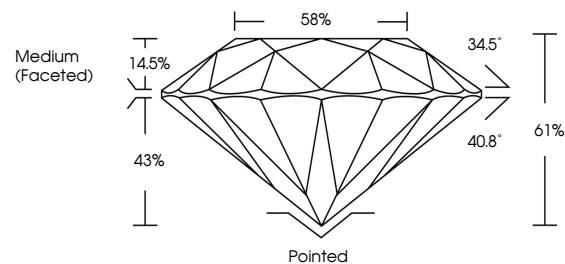
Symmetry **EXCELLENT**

Fluorescence **NONE**

Inscription(s) **LG780686451**

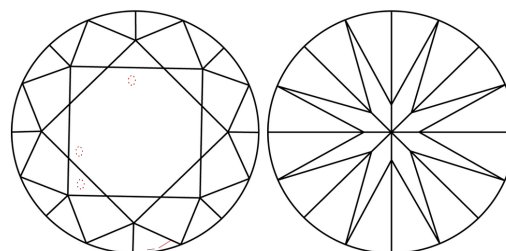
Comments: This Laboratory Grown Diamond was created by Chemical Vapor Deposition (CVD) growth process.  
Type IIa

**PROPORTIONS**



Sample Image Used

**CLARITY CHARACTERISTICS**



**KEY TO SYMBOLS**

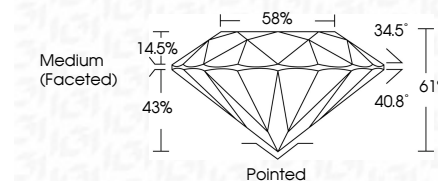
Red symbols indicate internal characteristics.  
Green symbols indicate external characteristics.

**COLOR**

D E F G H I J Faint Very Light Light

**CLARITY**

| FL       | IF                  | VS <sup>1-2</sup>           | VS <sup>1-2</sup>      | SI <sup>1-2</sup> | I <sup>1-3</sup> |
|----------|---------------------|-----------------------------|------------------------|-------------------|------------------|
| Flawless | Internally Flawless | Very Very Slightly Included | Very Slightly Included | Slightly Included | Included         |



**ADDITIONAL GRADING INFORMATION**

Polish **EXCELLENT**

Symmetry **EXCELLENT**

Fluorescence **NONE**

Inscription(s) **LG780686451**

Comments: This Laboratory Grown Diamond was created by Chemical Vapor Deposition (CVD) growth process.  
Type IIa



**IGI**



|                        |                                  |                    |             |                |
|------------------------|----------------------------------|--------------------|-------------|----------------|
| March 6, 2026          | IGI Report No <b>LG780686451</b> | <b>2.02 CARATS</b> | <b>E</b>    | <b>Pointed</b> |
| <b>ROUND BRILLIANT</b> | <b>8.11 - 8.20 X 4.98 MM</b>     | Carat Weight       | Color Grade | Cut Grade      |
|                        |                                  | VS 1               | IDEAL       | 61%            |
|                        |                                  | Medium (Faceted)   |             | 58%            |
|                        |                                  | Polish             | Symmetry    | Fluorescence   |
|                        |                                  | EXCELLENT          | EXCELLENT   | NONE           |
|                        |                                  | Inscription(s)     |             |                |
|                        |                                  | LG780686451        |             |                |

Comments: This Laboratory Grown Diamond was created by Chemical Vapor Deposition (CVD) growth process.  
Type IIa