



ELECTRONIC COPY

LG780698846
Report verification at igi.org



April 16, 2026

IGI Report Number **LG780698846**

Description **LABORATORY GROWN DIAMOND**

Shape and Cutting Style **ROUND BRILLIANT**

Measurements **8.18 - 8.21 X 4.93 MM**

GRADING RESULTS

Carat Weight **2.03 CARATS**

Color Grade **D**

Clarity Grade **VVS 2**

Cut Grade **IDEAL**

April 16, 2026

IGI Report Number **LG780698846**

Description **LABORATORY GROWN DIAMOND**

Shape and Cutting Style **ROUND BRILLIANT**

Measurements **8.18 - 8.21 X 4.93 MM**

GRADING RESULTS

Carat Weight **2.03 CARATS**

Color Grade **D**

Clarity Grade **VVS 2**

Cut Grade **IDEAL**

ADDITIONAL GRADING INFORMATION

Polish **EXCELLENT**

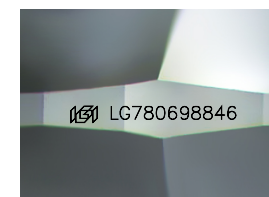
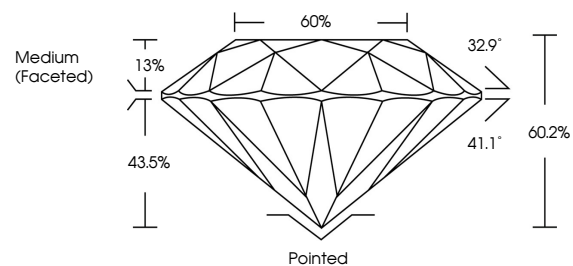
Symmetry **EXCELLENT**

Fluorescence **NONE**

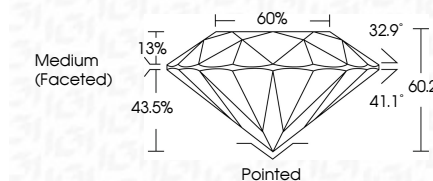
Inscription(s) **IGI LG780698846**

Comments: This Laboratory Grown Diamond was created by Chemical Vapor Deposition (CVD) growth process. Type IIa

PROPORTIONS



Sample Image Used



COLOR

D E F G H I J Faint Very Light Light

CLARITY

| FL | IF | VVS ¹⁻² | VS ¹⁻² | SI ¹⁻² | I ¹⁻³ |
|----------|---------------------|-----------------------------|------------------------|-------------------|------------------|
| Flawless | Internally Flawless | Very Very Slightly Included | Very Slightly Included | Slightly Included | Included |

ADDITIONAL GRADING INFORMATION

Polish **EXCELLENT**

Symmetry **EXCELLENT**

Fluorescence **NONE**

Inscription(s) **IGI LG780698846**

Comments: This Laboratory Grown Diamond was created by Chemical Vapor Deposition (CVD) growth process. Type IIa



IGI



| | | | | | | | | |
|-----------------------|---------------------------|--------------|-------------|---------------|-----------|-----------|------------------|---|
| April 16, 2026 | IGI Report No LG780698846 | 2.03 CARATS | D | Pointed | EXCELLENT | EXCELLENT | None | IGI LG780698846 |
| 8.18 - 8.21 X 4.93 MM | ROUND BRILLIANT | Carat Weight | Color Grade | Clarity Grade | Depth | Table | Girdle | Culet |
| | | | | VVS 2 | 60.2% | 60% | Medium (Faceted) | Polish |
| | | | | IDEAL | | | | Symmetry |
| | | | | | | | | Fluorescence |
| | | | | | | | | Inscription(s) |
| | | | | | | | | Comments: This Laboratory Grown Diamond was created by Chemical Vapor Deposition (CVD) growth process. Type IIa |