



March 12, 2026

**IGI Report Number** LG780699001  
**ROUND BRILLIANT**  
**LABORATORY GROWN DIAMOND**  
**5.88 - 5.92 X 3.65 MM**

**Carat Weight** 0.78 CARAT  
**Color Grade** E  
**Clarity Grade** VVS 1  
**Cut Grade** IDEAL  
**Polish** EXCELLENT  
**Symmetry** EXCELLENT  
**Fluorescence** NONE  
**Inscription(s)** IGI LG780699001

**Comments:** As Grown - No indication of post-growth treatment. This Laboratory Grown Diamond was created by High Pressure High Temperature (HPHT) growth process. Type II

**LABORATORY GROWN DIAMOND REPORT**

March 12, 2026  
IGI Report Number **LG780699001**  
Description **LABORATORY GROWN DIAMOND**  
Shape and Cutting Style **ROUND BRILLIANT**  
Measurements **5.88 - 5.92 X 3.65 MM**

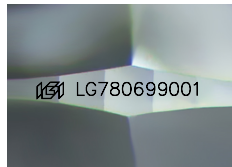
**GRADING RESULTS**

**Carat Weight** 0.78 CARAT  
**Color Grade** E  
**Clarity Grade** VVS 1  
**Cut Grade** IDEAL

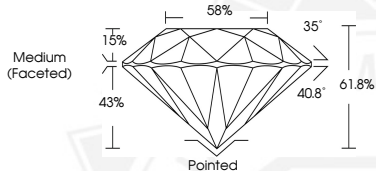
**ADDITIONAL GRADING INFORMATION**

**Polish** EXCELLENT  
**Symmetry** EXCELLENT  
**Fluorescence** NONE  
**Inscription(s)** IGI LG780699001

**Comments:** As Grown - No indication of post-growth treatment. This Laboratory Grown Diamond was created by High Pressure High Temperature (HPHT) growth process. Type II



Sample Image Used



March 12, 2026

**IGI Report Number** LG780699001  
**ROUND BRILLIANT**  
**LABORATORY GROWN DIAMOND**  
**5.88 - 5.92 X 3.65 MM**

**Carat Weight** 0.78 CARAT  
**Color Grade** E  
**Clarity Grade** VVS 1  
**Cut Grade** IDEAL  
**Polish** EXCELLENT  
**Symmetry** EXCELLENT  
**Fluorescence** NONE  
**Inscription(s)** IGI LG780699001

**Comments:** As Grown - No indication of post-growth treatment. This Laboratory Grown Diamond was created by High Pressure High Temperature (HPHT) growth process. Type II

THIS DOCUMENT WAS PRODUCED WITH THE FOLLOWING SECURITY MEASURES: SPECIAL DOCUMENT PAPER, INK SCREENS, WATERMARK, BACKGROUND DESIGNS, HOLOGRAM AND OTHER SECURITY FEATURES NOT LISTED AND DO EXCEED DOCUMENT SECURITY INDUSTRY GUIDELINES.

For terms & conditions and to verify this report, please visit [www.igi.org](http://www.igi.org)