



LABORATORY GROWN DIAMOND REPORT

March 11, 2026
 IGI Report Number **LG781605363**
 Description **LABORATORY GROWN DIAMOND**
 Shape and Cutting Style **MODIFIED PEAR STEP CUT**
 Measurements **9.44 X 5.53 X 3.13 MM**

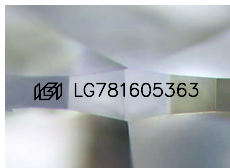
GRADING RESULTS

Carat Weight **0.96 CARAT**
 Color Grade **D**
 Clarity Grade **VVS 2**

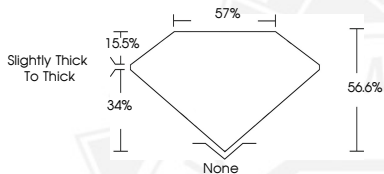
ADDITIONAL GRADING INFORMATION

Polish **EXCELLENT**
 Symmetry **VERY GOOD**
 Fluorescence **NONE**
 Inscription(s) **IGI LG781605363**

Comments: This Laboratory Grown Diamond was created by
 Chemical Vapor Deposition (CVD) growth process.
 Type IIa



Sample Image Used



March 11, 2026
 IGI Report Number **LG781605363**
 MODIFIED PEAR STEP CUT
 LABORATORY GROWN DIAMOND
 9.44 X 5.53 X 3.13 MM
 Carat Weight **0.96 CARAT**
 Color Grade **D**
 Clarity Grade **VVS 2**
 Polish **EXCELLENT**
 Symmetry **VERY GOOD**
 Fluorescence **NONE**
 Inscription(s) **IGI LG781605363**

Comments: This Laboratory Grown
 Diamond was created by
 Chemical Vapor Deposition (CVD)
 growth process. Type IIa



March 11, 2026
 IGI Report Number **LG781605363**
 MODIFIED PEAR STEP CUT
 LABORATORY GROWN DIAMOND
 9.44 X 5.53 X 3.13 MM
 Carat Weight **0.96 CARAT**
 Color Grade **D**
 Clarity Grade **VVS 2**
 Polish **EXCELLENT**
 Symmetry **VERY GOOD**
 Fluorescence **NONE**
 Inscription(s) **IGI LG781605363**

Comments: This Laboratory Grown
 Diamond was created by
 Chemical Vapor Deposition (CVD)
 growth process. Type IIa



THIS DOCUMENT WAS PRODUCED WITH THE FOLLOWING SECURITY MEASURES: SPECIAL DOCUMENT PAPER, INK SCREENS, WATERMARK, BACKGROUND DESIGNS, HOLOGRAM AND OTHER SECURITY FEATURES NOT LISTED AND DO EXCEED DOCUMENT SECURITY INDUSTRY GUIDELINES.