



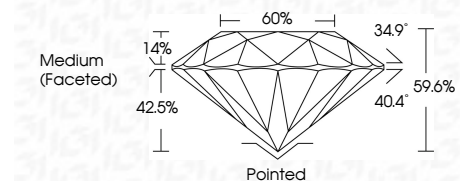
ELECTRONIC COPY

LG781610038 Report verification at igi.org



March 20, 2026 IGI Report Number LG781610038 Description LABORATORY GROWN DIAMOND Shape and Cutting Style ROUND BRILLIANT Measurements 7.57 - 7.60 X 4.53 MM

GRADING RESULTS Carat Weight 1.61 CARAT Color Grade F Clarity Grade VS 1 Cut Grade IDEAL



ADDITIONAL GRADING INFORMATION Polish EXCELLENT Symmetry EXCELLENT Fluorescence NONE Inscription(s) IGI LG781610038 Comments: This Laboratory Grown Diamond was created by Chemical Vapor Deposition (CVD) growth process. Type IIa



March 20, 2026 IGI Report No LG781610038 ROUND BRILLIANT 7.57 - 7.60 X 4.53 MM 1.61 CARAT F VS 1 IDEAL 59.6% 60% Medium (Faceted) Pointed EXCELLENT EXCELLENT NONE IGI LG781610038 Comments: This Laboratory Grown Diamond was created by Chemical Vapor Deposition (CVD) growth process. Type IIa

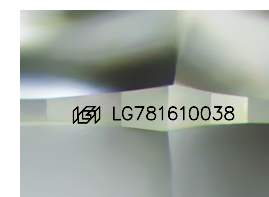
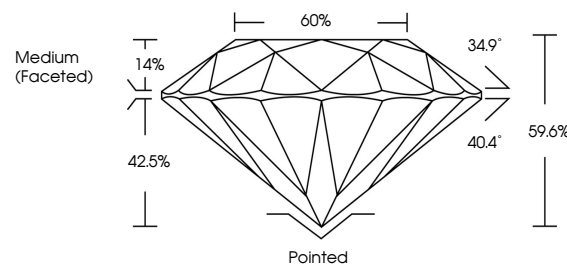
March 20, 2026 IGI Report Number LG781610038 Description LABORATORY GROWN DIAMOND Shape and Cutting Style ROUND BRILLIANT Measurements 7.57 - 7.60 X 4.53 MM

GRADING RESULTS Carat Weight 1.61 CARAT Color Grade F Clarity Grade VS 1 Cut Grade IDEAL

ADDITIONAL GRADING INFORMATION Polish EXCELLENT Symmetry EXCELLENT Fluorescence NONE Inscription(s) IGI LG781610038

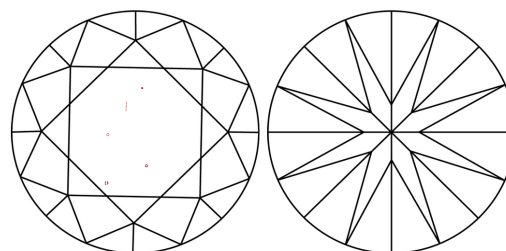
Comments: This Laboratory Grown Diamond was created by Chemical Vapor Deposition (CVD) growth process. Type IIa

PROPORTIONS



Sample Image Used

CLARITY CHARACTERISTICS



KEY TO SYMBOLS

Red symbols indicate internal characteristics. Green symbols indicate external characteristics.

COLOR

D E F G H I J Faint Very Light Light

CLARITY

FL IF VS 1-2 VS 1-2 SI 1-2 I 1-3 Flawless Internally Flawless Very Very Slightly Included Very Slightly Included Slightly Included Included

